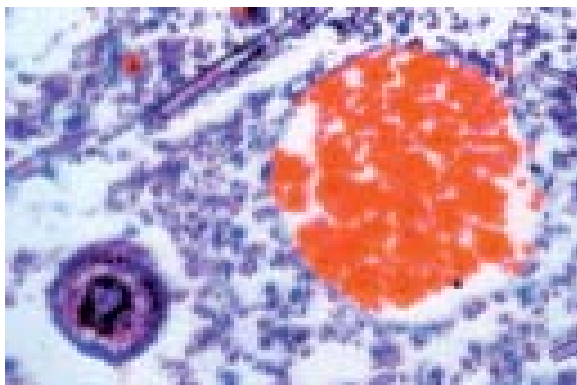
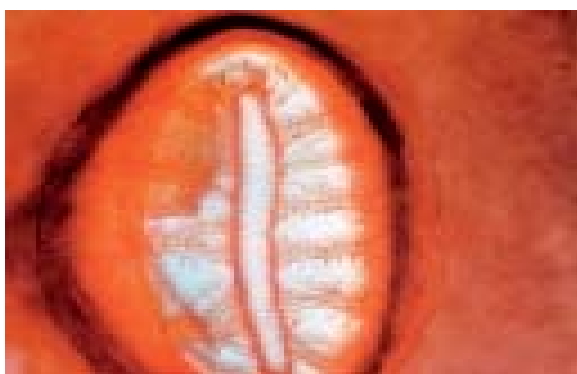


## BACTERIOLOGY



- BA0001** **Non-pathogenic**  
BACILLUS SUBTILIS, typical rod found in hay, soil, etc.
- BA001a** BACILLUS, mixture of gram positive and gram positive
- BA0002** COCCUS, a typical smear
- BA0003** SPIRILLUM VOLUTANS, a large fresh water spirillum
- BA0004** RHODOSPIRILLUM RUBRUM, chromogenic typical spirillum
- BA0005** BACTERIA TYPE-bacillus, coccus, spirillum in separate smears
- BA0006** BACTERIA TYPE-bacillus, coccus, spirillum in mixed smears
- BA0007** ENTEROBACTER AEROGENES, a fermentation bacteria
- BA0008** ESCHERICHIA COLI, bacillus found in human digestive tract
- BA0009** LACTOBACILLUS BULGARICUS, pure culture from yoghurt
- BA0010** PROTEUS VULGARIS, a common putrefaction bacteria
- BA0011** RHIZOBIUM, nitrogen fixing bacillus from culture
- BA0011a** RHIZOBIUM, section of root nodule of leguminous plant
- BA0012** SERRATIA MARCESCENS, a common fermentation organism producing red color
- BA0013** STREPTOCOCCUS, a typical chain formation



- BA0020** **Pathogenic**  
ALCALIGENES FECALIS, a bacillus that causes colon constipation
- BA0022** CLOSTRIDIUM PERFRINGENS, cause gas gangrenes food poisoning
- BA023a** CORYNEBACTERIUM GLUTAMICUM
- BA0024** DIPLOCOCCUS PNEUMONIAE, coccus that causes pneumonia
- BA0025** KLEBSIELLA PNEUMONIAE, coccus that causes pneumoniae
- BA0026** MYCOBACTERIUM TUBERCULOSIS, smear from sputum showing acid-fast bacillus
- BA0027** NEISSERIA GONORRHEAE, from pus, most common of the venereal diseases
- BA0028** PSUEDOMONAS AERUGINOSA, causes blue or green pus

- BA0029** SALMONELLA TYPHOSA, a bacillus that causes typhoid fever
- BA0030** SHIGELLA DYSENTERIAE, cause of bacillary dysentery
- BA0031** VIBRIO COMA, cause asiatic cholera (El tor)
- BA0032** SARCINA LUTEA, spores, individuals arranged in packets
- BA0033** STAPHYLOCOCCUS AUREUS, cause of boils, abscesses, suppuration in wounds
- BA0034** BRUCELLA, rods usually pathogenic for cattle
- BA0035** NEISSERIA CATTARRHALIS, cause of nasal catarach

## BOTANY



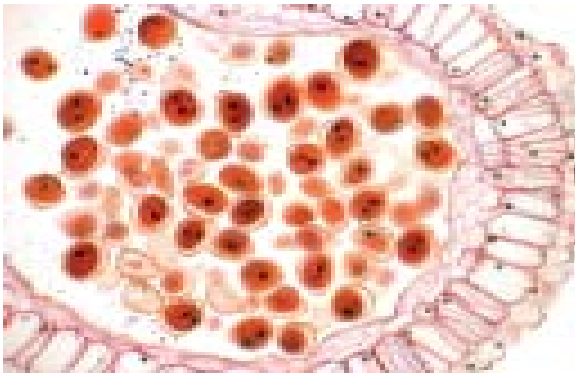
- BO0001** **Cyanophyta (Blue-green Algae)**  
ANABAENA, w.m. of filaments with heterocysts and spores
- BO0002** GLEOCAPSA, w.m. of individuals and colonies in capsules
- BO0003** NOSTOC, w.m. of filaments with heterocysts
- BO0004** OSCILLATORIA, w.m. of simple, unbranched filamentous form
- BO0005** SPIRULINA, w.m. of large unicellular spirals
- BO0007** BLUE-GREEN ALGAE, mixed
- BO0008** DIATOMS, w.m. of mixed fresh water
- BO0009** DIATOMS, w.m. of marine form
- BO0010** VAUCHERIA, w.m. of filaments with sex organs

- BO0011** **Chlorophyta (Green Algae)**  
CHAETOPHORA, w.m. of filaments
- BO0012** CHARA, w.m. of branches bearing sex organs
- BO0013** CLADOPHORA, w.m. of branched filaments with multinucleate cells
- BO0014** CHLAMYDOMONAS, w.m. of biflagellate cells with cup-shaped chloroplasts
- BO0015** CHLORELLA, w.m. of single cells
- BO0016** CLOSTERIUM, w.m. of a common crescent-shaped desmid
- BO0017** CLOSMARIUM, w.m. of vegetative desmid
- BO0019** DESMIDS, w.m. of mixed species
- BO0020** DRAPARNALDIA, w.m. of long main filaments with lateral clusters of branches
- BO0021** EUDORINA, w.m. of biflagellate cells in loose sphere
- BO0022** HYDRODICTYON, w.m. of older cells and young nets
- BO0023** OEDOGONIUM, w.m. of filaments with sex organs
- BO0024** PANDORINA, w.m. of biflagellate cells in spherical 16-celled colonies
- BO0025** PEDIASTRUM, w.m. of stellate, plate-like colonies
- BO0026** PITHOPHORA, w.m. showing intercalary akinetes
- BO0027** PROTOCOCCUS, w.m. of single cells and small packets
- BO0028** SCENEDESMUS, w.m. of elongated cells attached laterally in groups of four
- BO0029** SPIROGYRA, w.m. of vegetative filaments with single chloroplast
- BO0030** SPIROGYRA, w.m. of vegetative filaments with multiple chloroplast
- BO0031** SPIROGYRA, w.m. of vegetative filaments in scalariform conjugation
- BO0032** SPIROGYRA, w.m. of vegetative filaments showing lateral conjugation

- BO0034** ULOTHRIX, w.m. of simple filaments showing zoospores and gametes  
**BO0035** VOLVOX, w.m. of spherical colonies with sex cells and zygotes  
**BO0036** ZYGNEMA, w.m. of vegetative filaments showing paired stellate chloroplast  
**BO0037** ZYGNEMA CONJUGATING, filaments  
**BO0038** MIXED GREEN-ALGAE, a mixture of commonly studied green algae  
**BO0039** EUGLENA, w.m. of flagellated form  
**BO0040** GONIUM, w.m. of motile colonies in plate form

**Phaeophyta (Brown Algae)**

- BO0046** ECTOCARPUS, w.m. of filaments with plurilocular sporangia  
**BO0047** FUCUS DIOECIOUS, c.s. of male conceptacle  
**BO0048** FUCUS DIOECIOUS, c.s. of female conceptacle  
**BO0049** FUCUS, c.s. of male and female conceptacle in 1 slide  
**BO0050** FUCUS (MONOECIOUS), c.s. of conceptacle showing oogonia and antheridia  
**BO0051** LAMINARIA, section of blade with sporangia  
**BO0052** SARGASSUM, c.s thru region of sex organs

**Rhodophyta (Red Algae)**

- BO0054** POLYSIPHONIA, w.m. of vegetative form  
**BO0055** POLYSIPHONIA, w.m. of cystocarps  
**BO0056** POLYSIPHONIA, w.m. of tetraspores  
**BO0057** POLYSIPHONIA, w.m. of antheridia

**Mycophyta (Fungi)**

- BO0060** CANDIDA ALBICANS, smear from culture  
**BO0061** ALBUGO CANDIDA, section of sporangiophores in capsella  
**BO0062** ASPERGILLUS, w.m. of mycelium with conidiospore  
**BO0063** COPRINUS (MUSHROOMS), c.s. of gills with basidia and spores  
**BO0064** COPRINUS, l.s. of small mushrooms  
**BO0065** CORN RUST, c.s. of infected leaf  
**BO0066** LYCOPERDON (puffball), l.s. of basidio- carp with spores  
**BO0067** MORCHELLA, c.s. through edible morel to show asci in apothecium  
**BO0068** MUCOR, w.m. demonstrating mycelia and sporangia  
**BO0069** PENICILLIUM, w.m. demonstrating broom- like conidiospores  
**BO0070** PEZIZA, c.s. through cup with asci  
**BO0071** POLYPORUS, section of pores with basidia and spores  
**BO0072** RHIZOPUS, w.m. of mycelium and sporangia  
**BO0073** RHIZOPUS, w.m. of mycelium and zygotes  
**BO0074** SAPROLEGNIA, (water mold)  
**BO0075** PUCCINIA GRAMINIS, (wheat rust) section of aecia  
**BO0076** PUCCINIA GRAMINIS, (black rust) section of telia  
**BO0077** PUCCINIA GRAMINIS, (red rust) section of uredinia on wheat  
**BO0078** YEAST, w.m. showing budding

**Lichens**

- BO0085** PHYSCIA, section thru cup showing asci and thallus

**Bryophytes**

- BO0091** ANTHOCEROS, l.s. of sporophyte

- BO0092** ANTHOCEROS, c.s. of sporophyte showing spores  
**BO0093** MARCHANTIA, l.s. of antheridial disc  
**BO0094** MARCHANTIA, l.s. of archegonia  
**BO0095** MARCHANTIA, c.s. of thallus with capsule (gemma cup)  
**BO0096** MARCHANTIA, l.s. of sporophyte  
**BO0097** MARCHANTIA, c.s. of thallus showing air chamber and pores  
**BO0098** RICCIA, w.m. of thallus showing antheridia  
**BO0099** RICCIA, section of thallus showing archegonia  
**BO0100** RICCIA, w.m. of thallus showing mature sporophyte  
**BO0101** RICCIA, section of nearly mature or mature sporophyte

**Musci, Mosses**

- BO0110** MNIUM, l.s. of antheridial head  
**BO0111** MNIUM, l.s. of archegonial head  
**BO0112** POLYTRICHUM, w.m. of sporophyte  
**BO0113** POLYTRICHUM, l.s. of capsule with spores  
**BO0114** PROTONEMA (MOSS), of germinating spores  
**BO0115** MNIUM (MOSS), w.m. of leaf with chloroplast  
**BO0116** SPHAGNUM, w.m. of leaf

**Pteridophytes**

- BO0123** FERN, c.s. of root  
**BO0124** IRIS, c.s. of rhizome  
**BO0125** PTERIDIUM (FERN), c.s. of rhizome  
**BO0126** FERN, c.s. of stem (rachis)  
**BO0127** FERN, c.s. of leaf with sporangia  
**BO0128** FERN SPORANGIA, w.m. showing annulus and spores  
**BO0129** FERN, w.m. of thallus showing spores  
**BO0130** FERN SPORES, w.m. showing germination  
**BO0131** FERN PROTHALLIUM, showing antheridia only  
**BO0132** FERN PROTHALLIUM, showing archegonia and antheridia  
**BO0133** FERN PROTHALLIUM, showing archegonia  
**BO0134** FERN PROTHALLIUM, section with archegonia  
**BO0135** FERN PROTHALLIUM, section with antheridia  
**BO0136** FERN PROTHALLIUM, w.m. of mature sporophyte  
**BO136a** FERN PROTHALLIUM, w.m. showing young sporophyte with coiled leaf  
**BO0137** EQUISETUM, l.s. of strobilus  
**BO0138** LYCOPODIUM, l.s. of strobilus  
**BO138a** LYCOPODIUM, c.s. of stem  
**BO0139** SELAGINELLA, l.s. of strobilus  
**BO0139a** SELAGINELLA, w.m. of strobilus  
**BO0139b** SELAGINELLA, c.s. of stem

**Gymnosperms**

- BO0199** PINUS SILVESTRIS, c.s. of leaf 2- needle type  
**BO0200** PINUS INSULARIS, c.s. of leaf 3- needle type  
**BO0201** PINE (PINUS), c.s. of young stem  
**BO0202** PINE, c.s. of older stem  
**BO0203** PINE, c.s. of wood  
**BO0204** PINE, radial section of wood  
**BO0205** PINE, tangential section of wood  
**BO0205a** PINE, radial and tangential section of wood  
**BO0206** PINE, c.s. of young root  
**BO0207** PINE, c.s. of older root  
**BO0208** PINE l.s. of female cone, showing general structure  
**BO0209** PINE l.s. of male cone, showing general structure  
**BO0209a** PINE, c.s. of male cone  
**BO0210** PINE, l.s. of the general structure of an ovule

**Angiosperms - Dicot roots**

- BO0251** HELIANTHUS, c.s. of young root  
**BO0252** HELIANTHUS, c.s. of older root  
**BO0253** MONGO, c.s. of young root  
**BO0254** MONGO, c.s. of older root  
**BO0255** VICIA, c.s. of young root  
**BO0256** VICIA, c.s. of older root  
**BO0257** BEAN, l.s. of root  
**BO0258** RANUNCULUS, c.s. of young root  
**BO0259** RANUNCULUS, c.s. of older root  
**BO0260** RANUNCULUS, c.s. of young and old root  
**BO0261** MONOCOT AND DICOT, c.s. of root  
**BO0262** TILIA, c.s. of root

BO0264 ROOT, c.s. showing origin of lateral growth

#### Angiosperms - Monocot roots

BO0270 COMMELINA, c.s. of root  
 BO0271 CORN, c.s. of root  
 BO0272 CORN, l.s. of root  
 BO0273 CORN, l.s. of root tip with cap  
 BO0274 ROOT HAIRS, w.m. showing growth of hairs  
 BO0275 LILY, c.s. of root  
 BO0276 ONION, c.s. of root  
 BO0278 ONION, l.s. of root tip  
 BO0279 WATERLILY, c.s. showing lateral growth origin  
 BO0280 WATERLILY, l.s. showing lateral growth origin  
 BO0281 ELODEA, c.s. of root  
 BO281a ORCHID, root c.s.

#### Trichomes

BO0290 BRISTLE, w.m. of trichome  
 BO0291 SIMPLE HAIR, w.m. of trichome  
 BO0292 BRANCHING, w.m. of trichome  
 BO0293 GLANDULAR, w.m. of trichome  
 BO0294 SCALE, w.m. of trichome  
 BO0295 STELLATE, w.m. of trichome  
 BO0296 STINGING, w.m. of trichome

#### Lenticels

BO0300 NERIUM, c.s. of stem showing complete structure of lenticels  
 BO0301 SAMBUCUS, c.s. of stem showing complete structure of lenticel

#### Dicot Stems

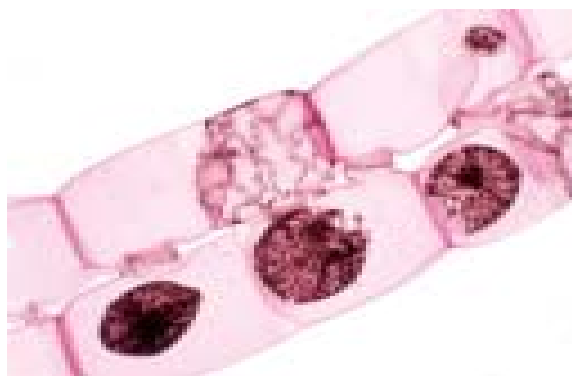
BO0307 ABSCISSION LAYER, l.s. of stem  
 BO0308 SAMBUCUS, l.s. of stem tip  
 BO0309 COLEUS, l.s. of stem tip  
 BO0311 DICOT AND MONOCOT, c.s. of representatives types  
 BO0312 ARISTOLOCHIA, c.s. of young stem  
 BO0313 ARISTOLOCHIA, c.s. of 1 year old stem  
 BO0314 ARISTOLOCHIA, c.s. of older stem  
 BO0315 ARISTOLOCHIA, l.s. of stem  
 BO0316 CUCURBITA, c.s. of stem showing sieve plates  
 BO0317 CUCURBITA, c.s. of stem showing sieve tubes  
 BO0318 CLOVER, c.s. of stem  
 BO0319 CADENA DE AMOR, c.s. of stem  
 BO0320 CUSCUTA (DODDER), c.s. of host stem showing haustoria of parasite  
 BO0321 HELIANTHUS, c.s. of young stem  
 BO0322 HELIANTHUS, c.s. of older stem  
 BO0323 HELIANTHUS, l.s. of stem  
 BO0324 HELIANTHUS, c.s. and l.s. of stem on one slide  
 BO0325 HIBISCUS, c.s. of young stem  
 BO0327 TILIA, c.s. of young stem  
 BO0327a TILIA, l.s. of stem  
 BO0328 TILIA, c.s. of 1 year stem  
 BO0329 TILIA, c.s. of 3 year or older stem  
 BO0330 CALCIUM OXALATE CRYSTALS, from c.s. of stem or leaf

BO0331 RAPHAIDE, from c.s. of stem or leaf  
 BO0332 ROSETTE, from c.s. of stem or leaf  
 BO0333 RANUNCULUS, c.s. of stem  
 BO0334 RICINUS, c.s. of stem  
 BO0335 SOLANUM (POTATO STARCH), section of mature fiber showing starch grains  
 BO0336 TILIA, c.s. of wood  
 BO0337 TILIA, radial section of wood  
 BO0338 TILIA, tangential section of wood  
 BO0339 TILIA, 3 sections of wood on 1 slide

#### Monocot Stems

BO0349 WATERLILY, c.s. of stem  
 BO0350 LILY c.s. of stem, a typical monocot  
 BO0351 COGON, c.s. of stem with closed collateral bundle  
 BO0352 CORN, c.s. of young stem with scattered bundle  
 BO0353 CORN, c.s. of older stem with closed collateral bundle  
 BO0354 CORN, l.s. of stem showing spiral, annular and reticulate vessels of the xylem  
 BO0355 CORN, c.s. and l.s. of stem

BO0356 CORN, l.s. of stem  
 BO0357 ELODEA, l.s. of stem tip showing cell development  
 BO0358 ELODEA, c.s. of stem, simple hydrophyte



#### Dicot leaves

BO0370 LEAF TYPES, c.s. of hydro-meso and xerophytic leaves  
 BO0371 BEGONIA, c.s. of leaf showing water storage tissue  
 BO0372 FICUS (RUBBER), c.s. of leaf showing cystoliths, prominent palisade layer, multiple epidermis and sunken stomata  
 BO0373 HELIANTHUS, c.s. of leaf  
 BO0374 IXORA, c.s. of atypical dorsiventral type leaf  
 BO0375 LIGUSTRUM (PRIVET), c.s. of typical mesophytic dicot leaf  
 BO0376 LILAC (SYRINGA), c.s. of typical mesophytic leaf  
 BO0377 NERIUM, c.s. of leaf showing thick cuticles, multiple epidermis, upper and lower palisade tissue and stomata in pits  
 BO0378 ROSE c.s. of leaf  
 BO0379 MONOCOT AND DICOT, c.s. of typical leaves  
 BO0380 DIANTHUS (CARNATION), c.s. of entire leaf with stomata and palisade all around and water tissue within Stomata  
 BO0390 IXORA, flat mount of dicot leaf epidermis showing stomata and guard cells  
 BO0391 RHODEO, monocot leaf epidermis showing stomata and guard cells  
 BO0392 LILY, monocot leaf epidermis showing stomata and guard cells

#### Monocot leaves

BO0400 CORN, c.s. of a typical mesophytic monocot leaf  
 BO0401a ELODEA, w.m. of submerged leaf, rarely more than 2- cells thick  
 BO0402 ELODEA, l.s. of leaf bud  
 BO0403 LILY, c.s. of monocotyledonous leaf with homogeneous mesophyll  
 BO0404 ONION, w.m. of epidermis from bulb showing plasmolyzed cells  
 BO0405 ONION, w.m. of epidermis from bulb showing turgid cells  
 BO0405a ONION, w.m. of epidermis from bulb showing both turgid and plasmolyzed cells  
 BO0406 PANDANUS, c.s. of leaf  
 BO0407 NYMPHAEA, c.s. of typical floating leaf with spongy tissue and stellate sclereids

#### Liliaceae

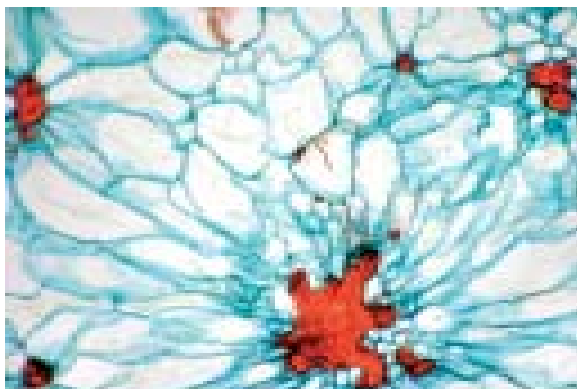
BO0417 LILY, c.s. of anther showing pollen mother cells in later prophase stage  
 BO0418 LILY, c.s. anther showing pollen mother cells in metaphase stage  
 BO0419 LILY, c.s. of anther showing pollen tetrads  
 BO0420 LILY, c.s. of anther showing mature pollen grains  
 BO0421 LILY, l.s. of bud showing developing anthers, stigma, ova and ovules  
 BO0422 LILY, l.s. of stigma and style  
 BO0423 LILY, c.s. of ovary, ovules with general structure  
 BO0424 LILY, c.s. of ovary, ovules with megaspore mother cells

**Flowers and Fruits**

- BO0450** CAPSELLA, l.s. of embryo with early and late cotyledon  
**BO0451** CORN, l.s. of mature embryo  
**BO0452** CADENA DE AMOR, c.s. of anther  
**BO0453** COMPOSITE FLOWER, l.s. of flower  
**BO0454** BEAN, c.s. of pod showing attached ovule nearly matured  
**BO0455** WHEAT GRAIN, c.s. showing endosperm, aleurone layer and grain coat  
**BO0456** WHEAT STARCH  
**BO0457** LYCOPERSICUM (TOMATO), c.s. of a fruit  
**BO0458** HIBISCUS, c.s. of anther  
**BO0472** LILY, w.m. of pollen grains  
**BO0473** MIXED, w.m. of pollen grains  
**BO0474** POLLEN TUBE, in w.m. of *Portulaca* stigma  
**BO0475** POLLEN GRAINS, w.m. of germinating pollen

**Macerated stems**

- BO0498** CORN, maceration of monocot stem showing traceids and vessels  
**BO0499** PINE, maceration of a typical gymnosperm stem  
**BO0500** CUCURBITA, maceration of a succulent herbaceous stem  
**BO0501** HELIANTHUS, maceration of an annual stem  
**BO0502** MAGNOLIA, maceration of stem  
**BO0503** TILIA, maceration of woody stem

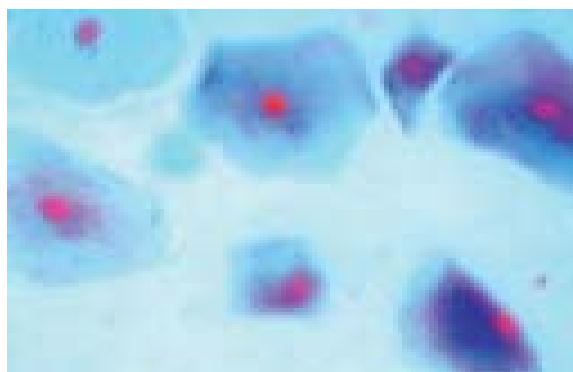
**Botany - Latest**

- BO0520** ADIANTUM, fertile frond  
**BO0521** ADIANTUM, gametophyte  
**BO0522** ALLIUM TUBEROSUM, root, c.s.  
**BO0523** AMMOPHILA ARENARIA, monocotyledon leaf  
**BO0524** ARACHIS HYPOGAE, old stem, c.s.  
**BO0525** ARACHIS HYPOGAE, young stem, c.s.  
**BO0526** ARISTOLOCHIA, STEM, dicotyledon  
**BO0527** ASCOCARP of TRUFFLES  
**BO0528** ASPERGILLUS, w.m.  
**BO0529** BLECHNUM SPICANT, fertile frond  
**BO0530** BLECHNUM SPICANT, infertile frond  
**BO0531** CAMELLIA SINENSIS, leaf, c.s. showing stone cells  
**BO0532** CAPSELLA, middle embryo, sec.  
**BO0533** CAPSELLA, old embryo, sec.  
**BO0534** CAPSELLA, young embryo, sec.  
**BO0535** CAPSICUM, pericarp cell  
**BO0536** COFFEE, leaf  
**BO0537** CORN, leaf, c.s.  
**BO0538** CORN, root c.s.  
**BO0539** CORN, root tip, l.s.  
**BO0540** CORN, seed, l.s.  
**BO0541** CORN, stem, c.s.  
**BO0542** CORN, stem, l.s.  
**BO0543** COTTON, root, c.s.  
**BO0544** CUCURBITA species  
**BO0545** CUSCUTA CHINENSIS, parasitic root, c.s.  
**BO0546** DAUCUS CAROTA var. SATIVA, root, c.s.  
**BO0547** DIFFERENT SHAPES OF ASCOCARPS  
**BO0548** EARTH PEA, root, c.s.  
**BO0549** EQUISETUM species, CONES SLIDE  
**BO0550** EQUISETUM species, STEM SLIDE  
**BO0551** ERICA species, LEAF, (dicot)  
**BO0552** FERN PROTHALLIUM, young sporophyte, w.m.  
**BO0553** FERN SORUS, sec  
**BO0554** FERN SPORANGIUM, w.m.

- BO0555** FERN, subterranean stem, c.s.  
**BO0556** FICUS, leaf, c.s. showing faveolate stomas  
**BO0557** FIG, leaf c.s.  
**BO0558** FUCUS, sec., female conceptacles, dioecious sp.  
**BO0559** FUCUS, sec., male conceptacles, dioecious sp.  
**BO0560** FUCUS, sec., conceptacles, monoecious sp.  
**BO0561** FUNARIA, l.s. of CAPSULE SLIDE  
**BO0562** FUNARIA, w.m. of PERISTOME of CAPSULE  
**BO0563** GOSSYPIUM, leaf, c.s.  
**BO0564** GOSSYPIUM, old stem, c.s.  
**BO0565** GOSSYPIUM, young stem, c.s.  
**BO0566** HELIANTHUS, old root, c.s.  
**BO0567** HELIANTHUS, ovary, l.s.  
**BO0568** HELIANTHUS, stem, c.s.  
**BO0569** HELIANTHUS, young stem, c.s.  
**BO0570** HERBACEOUS & WOODY stem, c.s.  
**BO0571** HIBISCUS SYRIACUS stem, c.s.  
**BO0572** HIRUDO NIPPONIA, w.m.  
**BO0573** HYDRILLA VERTICILLATA, stem tip, l.s.  
**BO0574** IPOMOEA BATATAS, root, c.s.  
**BO0575** IRIS, root, c.s.  
**BO0576** IRIS, sp. LEAF, monocot  
**BO0577** IRIS, STEM, monocot  
**BO0578** JASMINUM NUDIFLORUM, leaf, c.s.  
**BO0579** L.S. IN PINUS STEM SLIDE  
**BO0580** LICHEN, sec.  
**BO0582** LIGUSTRUM species, LEAF, dicot  
**BO0583** LILIUM, embryo, sac development, sec.  
**BO0584** LILY ANTHOR, c.s.  
**BO0585** LILY LEAF, c.s.  
**BO0586** LILY OVARY, c.s.  
**BO0587** LILY POLLEN, w.m.  
**BO0588** LUFFA CYLINDRICA, pollen grains, smear  
**BO0589** LYCOPODIUM CLAVATUM, STEM & CONES, 5 plants  
**BO0590** LYCOPODIUM SELAGO, STEM & CONES, 5 plants  
**BO0591** MALUS, STEM  
**BO0592** MARCHANTIA, female GENITAL ORGAN, l.s.  
**BO0593** MARCHANTIA GEMMAE Slide  
**BO0594** MARCHANTIA, male GENITAL ORGAN, l.s.  
**BO0595** MARCHANTIA MALE TUBE  
**BO0596** MARCHANTIA SORUS  
**BO0597** MARCHANTIA THALLUS, sec.  
**BO0598** MAX ROOT NODULE, c.s.  
**BO0599** MEDICAGO ALFALFA, stem, c.s.  
**BO0600** MEIOSIS, c.s. of LILIUM ANTHERS showing diff. stages of meiotic divisions  
**BO0601** MITOSIS, ONION ROOT TIP cells, sec.  
**BO0602** MIXED GREEN ALGAE  
**BO0603** MNIMUM species, MALE  
**BO0604** MNIMUM species, with CAPSULES  
**BO0605** MNIMUM, l.s. of ARCHEGONIAL HEAD  
**BO0606** MNIMUM, l.s. of CAPSULE  
**BO0607** MONOCOT & DICOT LEAVES, c.s.  
**BO0608** MONOCOT & DICOT ROOTS, c.s.  
**BO0609** MONOCOT & DICOT STEMS, c.s.  
**BO0610** MORUS ALBA PETIOLE, l.s. showing abscission layer  
**BO0611** MORUS STEM, c.s.  
**BO0612** MOSS ANTHERIDIA, l.s.  
**BO0613** MOSS LEAF  
**BO0614** MOSS PROTONEMA, w.m.  
**BO0615** MOSS PROTONEMATA, w.m.  
**BO0616** MOSS STEM  
**BO0617** MOSS, w.m.  
**BO0618** MOSS, l.s. of ANTHERIDIAL HEAD  
**BO0619** MOSS, LEAF w.m.  
**BO0620** NARCISSUS TAZETTA LEAF, c.s.  
**BO0621** NARCISSUS TAZETTA OVARY, c.s.  
**BO0622** NARCISSUS TAZETTA ROOT, l.s.  
**BO0623** NERIUM INDICUM, leaf, c.s., with faveolate stomas  
**BO0624** NERIUM INDICUM, stem, c.s.  
**BO0625** ONION, root, c.s.  
**BO0626** ONION, stoma, w.m.  
**BO0627** ORANGE, stem, c.s.  
**BO0628** ORYZA SATIVA, leaf, c.s.  
**BO0629** ORYZA SATIVA, root, c.s.  
**BO0630** ORYZA SATIVA, stoma, w.m.

<b>BO0631</b>	OSMANTHUS FRAGRANS, leaf, c.s. showing stone cells	<b>BO0719</b>	TILIA, 1-YEAR STEM, c.s.
<b>BO0632</b>	PELARGONIUM HORTORUM, stem, c.s.	<b>BO0720</b>	TILIA, 3-YEAR STEM, c.s.
<b>BO0633</b>	PELLIA, species, female	<b>BO0721</b>	TILIA, 1, 2, & 3-YEARS STEM, c.s.
<b>BO0634</b>	PELLIA, species, male	<b>BO0722</b>	TRITICUM AESTIVUM LEAF, c.s.
<b>BO0635</b>	PELLIA, species, capsules	<b>BO0723</b>	TRITICUM AESTIVUM ROOT, c.s.
<b>BO0636</b>	PENICILLIUM, w.m.	<b>BO0724</b>	TRITICUM AESTIVUM SEED, I.s
<b>BO0638</b>	PERSIMMON, Pulp Cell	<b>BO0725</b>	TRITICUM AESTIVUM STEM, c.s.
<b>BO0640</b>	PINE, female Globose Fruit, I.s.	<b>BO0726</b>	TRITICUM AESTIVUM STÔMA, w.m.
<b>BO0641</b>	PINE, leaf, c.s.	<b>BO0727</b>	VICIA FABIA, lateral ROOT, c.s.
<b>BO0642</b>	PINE, male Globose Fruit, I.s.	<b>BO0728</b>	VICIA FABIA, old ROOT, c.s.
<b>BO0643</b>	PINE, 1-Year Stem, c.s.	<b>BO0729</b>	VICIA FABIA, stoma, w.m.
<b>BO0644</b>	PINE, 10-Year Stem, c.s.	<b>BO0730</b>	VICIA FABIA, young ROOT, c.s.
<b>BO0645</b>	PINE POLLEN, w.m.	<b>BO0731</b>	VICIA FABIA, STEM
<b>BO0646</b>	PINE, Woody Stem, c.s.	<b>BM0079</b>	AGARICUS CAMPESTRIS, v.s. Pileus & Gills w/ Basidiophores
<b>BO0647</b>	PINUS, Ovula	<b>BM0080</b>	ALBUGO-SPORANGIA and OOSPORES
<b>BO0648</b>	PINUS, Pollen Grain	<b>BM0081</b>	ARCYRIA, w.m. of CAPILLITIUM
<b>BO0649</b>	PINUS SYLVESTRIS, leaf	<b>BM0082</b>	ASPERGILLUS, SECTION of CONIDIA
<b>BO0650</b>	PINUS SYLVESTRIS, Male Cone	<b>BM0083</b>	ASPERGILLUS, w.m. of SPHERICAL CONIDIOPHORES
<b>BO0651</b>	PINUS SYLVESTRIS, Root	<b>BM0084</b>	CLAVICEPS PURPUREA, v.s. in the Ascocarp
<b>BO0652</b>	PINUS SYLVESTRIS, Second Year, Female Cone	<b>BM0085</b>	ECTOTROPIC, w.m. of ROOTLETS of PINE or LARCH
<b>BO0653</b>	PINUS SYLVESTRIS, Stem	<b>BM0086</b>	ENDOTROPIC, FUNGAL ELEMENTS
<b>BO0654</b>	PLASMODESMATA, sec.	<b>BM0087</b>	ERYSIPHE, w.m. of Ascocarp
<b>BO0655</b>	POLLEN GERMINATION, w.m.	<b>BM0088</b>	MONILIA FRUCTIGENA, CONIDIOPHORES
<b>BO0656</b>	POLLEN GRAINS of ANGIOSPERMS	<b>BM0089</b>	MUCOR, w.m. with SPORANGIA
<b>BO0657</b>	POLYPODIUM VULGARIS, fertile frond	<b>BM0090</b>	MUCOR, w.m. with ZYGOSPORES
<b>BO0658</b>	POLYTRICHUM species, Male	<b>BM0091</b>	PENICILLUM, HYPHAE and CONIDIOPHORES
<b>BO0659</b>	POLYTRICHUM, species with capsules	<b>BM0092</b>	PEZIZA, SECTION of APOTHECIUM with ASCI SLIDE
<b>BO0660</b>	POLYPHYRA, w.m.	<b>BM0093</b>	PHYTOPHTHORA INFESTANS, w.m. of CONIDIOPHORES from Culture
<b>BO0661</b>	POTATO STARCH	<b>BM0094</b>	PEZIZA, v.s. in Ascocarp Slide
<b>BO0662</b>	PRIVET LEAF, c.s.	<b>BM0095</b>	PLASMIDIOPHORA BRASSICAE, Host Cell, sec.
<b>BO0663</b>	PTERIDIUM species, fertile frond	<b>BM0096</b>	PUCCINIA, HOST with AECIDIOSPORES
<b>BO0664</b>	PTERIDIUM species, Rhizome	<b>BM0097</b>	PUCCINIA, HOST with TELEUTOSPORES
<b>BO0665</b>	PTERIDIUM species, Root	<b>BM0098</b>	PUCCINIA, HOST with UREDOSPORES
<b>BO0666</b>	RANUNCULUS, species, Buttercup	<b>BM0099</b>	PYTHIUM, ASEXUAL STAGE, from Culture
<b>BO0667</b>	RANUNCULUS JAPONICUS, root, c.s.	<b>BM0100</b>	PYTHIUM, w.m. of Host Seedling with Sporangia
<b>BO0668</b>	RAPHANUS SATIVUS, fleshy root, c.s.	<b>BM0101</b>	RHIZOPUS NIGRICANS, w.m. with Sporangia
<b>BO0669</b>	RHIZOPUS NIGRICANS, w.m.	<b>BM0102</b>	RHIZOPUS NIGRICANS, ZYGOSPORES
<b>BO0670</b>	RICCIA THALLUS	<b>BM0103</b>	SACCHAROMYCES CEREVISIAE, Brewer's Yeast Budding
<b>BO0671</b>	SAMBUCUS, older species	<b>BM0104</b>	SAPROLEGNIA, ZOOSPORANGIA and OOSPORES
<b>BO0672</b>	SAMBUCUS WILLIAMSII, stem c.s.	<b>BM0105</b>	SPHAEROTHECA, SECTION with ASCI
<b>BO0673</b>	SELAGINELLA species, fertile	<b>BM0106</b>	STEMONITIS, w.m. of CAPILLITIUM and SPORES
<b>BO0674</b>	SOLANUM TUBEROSUM, Tuber, sec.	<b>BM0107</b>	SYNCHYTRIUM ENDOBIOTICUM, section of POTATO BLACK WART
<b>BO0675</b>	SOYA ROOT, c.s.	<b>BM0108</b>	UNCINULA, w.m. of ASCOCARP
<b>BO0676</b>	STARCH GRAIN of ZEA MAYS		
<b>BO0677</b>	STEM, c.s. showing COLLECHYMA		
<b>BO0678</b>	STEM, c.s. showing LENTICELS		
<b>BO0679</b>	STEM, c.s. showing SCLERENCHYMA		
<b>BO0680</b>	STEM, c.s. showing INTERCALARY MERISTEM		
<b>BO0681</b>	STEM, c.s. showing SIEVE TUBES		
<b>BO0682</b>	STONE CELLS, sec.		
<b>BO0683</b>	SUGARCANE ARMPIT BUD, c.s.		
<b>BO0684</b>	SUGARCANE, leaf, c.s.		
<b>BO0685</b>	SUGARCANE, root, c.s.		
<b>BO0686</b>	SUGARCANE, stem, c.s.		
<b>BO0687</b>	SUNKEN PLANT LEAF, c.s. showing PARENCHYMA		
<b>BO0688</b>	SYRINGO STEM TIP, I.s.		
<b>BO0689</b>	T.S. in AMMOPHILA ARENARATA LEAF		
<b>BO0690</b>	T.S. in ANTERRHINUM STEM		
<b>BO0691</b>	T.S. in ARALIA LEAF		
<b>BO0692</b>	T.S. in BEGONIA STEM		
<b>BO0693</b>	T.S. in ELODEA STEM		
<b>BO0694</b>	T.S. in FICUS ELASTICA		
<b>BO0695</b>	T.S. in FLOWER OVARY		
<b>BO0696</b>	T.S. in GOSSYPIUM LEAF		
<b>BO0697</b>	T.S. in HELIANTHUS, YOUNG DICOT STEM		
<b>BO0698</b>	T.S. in LAVENDULA STEM		
<b>BO0699</b>	T.S. in LINUM STEM		
<b>BO0700</b>	T.S. in LUFFA STEM		
<b>BO0701</b>	T.S. in MONOCOT LEAF, CYPERUS		
<b>BO0702</b>	T.S. in OLD PINUS STEM		
<b>BO0703</b>	T.S. in PELARGONIUM STEM		
<b>BO0704</b>	T.S. in PINUS LEAF		
<b>BO0705</b>	T.S. in POTAMOGETON STEM		
<b>BO0706</b>	T.S. in RETAMA STEM		
<b>BO0707</b>	T.S. in RICINUS COMMUNIS, old Dicot Root		
<b>BO0708</b>	T.S. in RUSCUS, monocot Root		
<b>BO0709</b>	T.S. in SALVIA STEM		
<b>BO0710</b>	T.S. in STEM TIP, growing point		
<b>BO0711</b>	T.S. in TILIA STEM SLIDE		
<b>BO0712</b>	T.S. in VICIA FABIA, young Dicot Root		
<b>BO0713</b>	T.S. in VITIS STEM, old Dicot		
<b>BO0714</b>	T.S. in ZEA, Monocot Stem		
<b>BO0715</b>	T.S. in WHEAT GRAIN SLIDE		
<b>BO0716</b>	TETRANYCHUS TELARIUS, w.m.		
<b>BO0717</b>	THREE TYPES of BACTERIA, smear		
<b>BO0718</b>	THREE TYPES of PLANT LEAVES		

## EMBRYOLOGY



### Starfish

- EM0001** STARFISH, sperm smear showing structure of spermatozoa with unusually long tails
- EM0002** STARFISH TESTIS, section of developing sperm in mature testis
- EM0003** STARFISH OVARY, c.s. of developing mature eggs
- EM0004** STARFISH, w.m. of unfertilized eggs showing the mature eggs
- EM0005** STARFISH POLAR BODY, w.m. of polar body formation
- EM0006** STARFISH EARLY CLEAVAGE, w.m. of eggs showing 1,2,4,8 and 16 cell stages

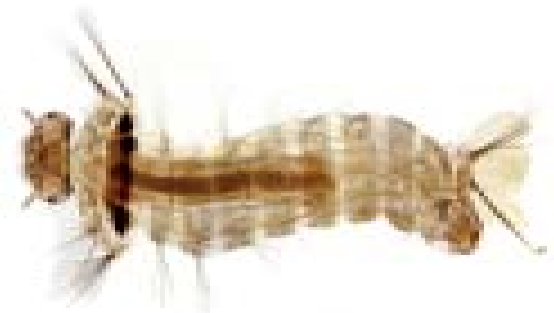
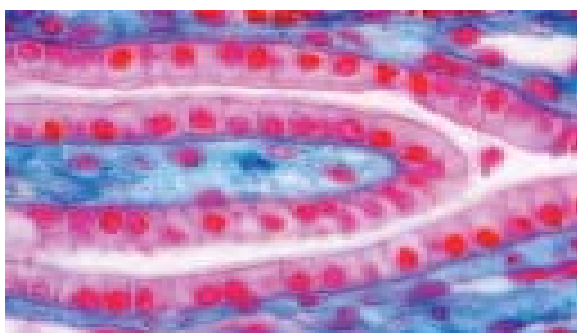
- EM0007** STARFISH LATE CLEAVAGE, w.m. of eggs showing 32 and 64 cell stages with formation of any early blastocoel
- EM0008** STARFISH MORUL
- EM0009** STARFISH BLASTULA, w.m. of egg showing the large blastocoel
- EM0010** STARFISH EARLY GASTRULA, w.m. of early gastrula showing invagination in different stages
- EM0011** STARFISH LATE GASTRULA, w.m. of eggs in late gastrula stage
- EM0012** STARFISH BIPINNARIA, w.m. of the free-swimming larva
- EM0013** STARFISH DEVELOPMENT, w.m. of all stages from the unfertilized eggs through bipinnaria stage

### Sea Urchin

- EM0020** SEA URCHIN SPERM, smear showing structure of spermatozoa with unusually long tails
- EM0021** SEA URCHIN TESTIS, section of developing sperm in mature testis
- EM0022** SEA URCHIN OVARY, c.s. of developing mature eggs
- EM0023** SEA URCHIN UNFERTILIZED EGG, w.m.
- EM0024** SEA URCHIN EARLY CLEAVAGE, w.m. a combination mount of one cell to 16 blastomeres inclusive
- EM0025** SEA URCHIN LATE CLEAVAGE, w.m. 32 and 64 cell stages included
- EM0026** SEA URCHIN BLASTULA, w.m. showing blastocoel clearly
- EM0027** SEA URCHIN EARLY GASTRULA, w.m. of early gastrula showing invagination of cells
- EM0028** SEA URCHIN LATE GASTRULA, w.m.
- EM0029** SEA URCHIN PLUTEUS, w.m.
- EM0030** SEA URCHIN DEVELOPMENT, w.m. of all stages in development through pluteus

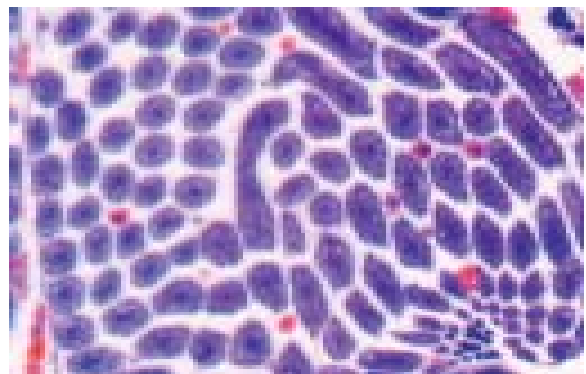
### Frog

- EM0045** FROG EARLY CLEAVAGE, c.s. showing 4 -16 cells
- EM0046** FROG LATE CLEAVAGE, c.s. showing 32 or 64 cells
- EM0047** FROG EARLY BLASTULA, c.s. showing blastocoel in early formation
- EM0048** FROG LATE BLASTULA, c.s. showing well-formed blastocoel and surrounding cells.
- EM0049** FROG EARLY GASTRULA, l.s. showing the dorsal lip and the beginning of involution
- EM0050** FROG YOLK PLUG, typical gastrula, l.s. demonstrating the stage after the formation of the ventral lip where yolk plug, blastopore, gastrocoele, ectoderm and endoderm are seen.
- EM0051** FROG NEURAL PLATE, c.s. showing medullary plate at an early stage of development
- EM0052** FROG NEURAL FOLD, Sections where neural folds and grooves are quite pronounced.
- EM0053** FROG TRANSITION, c.s. of transition between neuralfold and neural tube
- EM0054** FROG NEURAL TUBE, c.s. showing neural folds completely fused to form the neural tube.
- EM0065** FROG (7 mm), w.m.
- EM0066** FROG (7 mm), Entire specimen sectioned and mounted in series showing stomodium, external gill in this stage.
- EM066a** FROG (7 mm), typical c.s.
- EM0067** FROG (7 mm), serial sagittal section
- EM067a** FROG (7 mm), typical sagittal section (not serial) with representative regions.
- EM0068** FROG (10 mm), w.m.
- EM0069** FROG (10 mm), Internal gill stage. Entire specimen sectioned and mounted in series.



### Chick

- EM0080** CHICK UNINCUBATED, w.m.
- EM0081** CHICK (13-16 HRS), c.s. showing primitive streak
- EM0082** CHICK (13-16 HRS), w.m. with primitive streak.
- EM0083** CHICK (18 HRS), w.m. showing the formation of the notochord, Hensen's node, primitive streak
- EM0084** CHICK (18 HRS), Serial c.s. showing development through the notochord, Hensen's node and primitive streak.
- EM0085** CHICK (21 HRS), w.m. showing 1-3 somites, formation of head fold, neural groove
- EM0086** CHICK (21 HRS), serial c.s.
- EM0087** CHICK (24 HRS), w.m. showing 4-7 somites prominent neural fold and formation of foregut and paired heart primordia
- EM0088** CHICK (24 HRS), serial c.s.
- EM0089** CHICK (24 HRS), typical c.s.
- EM0090** CHICK (24 HRS), serial sagittal section
- EM0091** CHICK (24 HRS), typical sagittal section
- EM0092** CHICK (28 HRS), w.m. showing 8-10 somites closure of neural groove, differentiation of head region, three primary brain vesicles
- EM0093** CHICK (28 HRS), serial c.s.
- EM0094** CHICK (33 HRS), w.m. showing 11-14 somites, further differentiation of brain, formation of the heart and of embryonic blood vessels
- EM0095** CHICK (33 HRS), serial c.s.
- EM0096** CHICK (33 HRS), typical c.s.
- EM0097** CHICK (33 HRS), serial sagittal section
- EM0098** CHICK (33 HRS), typical sagittal section
- EM0099** CHICK (36-40 HRS), w.m. showing 15-18 somites, beginning of flexion and torsion in the head region, beginning of blood circulation, appearance of auditory pits.
- EM0100** CHICK (43 HRS), w.m. showing 19-23 somites, further flexion and torsion fold of amnion, mandibular aortic arch, optic cup
- EM0101** CHICK (48 HRS), w.m. showing 24-28 somites, flexion and torsion progressing further caudally, appearance of tail fold of amnion 2-3 aortic arches, optic cup and lens
- EM0102** CHICK (48 HRS), serial c.s.
- EM0103** CHICK (48 HRS), typical c.s.
- EM0104** CHICK (48 HRS), serial sagittal section
- EM0105** CHICK (48 HRS), typical sagittal section
- EM0106** CHICK, showing 29-32 somites, beginning of the cervical flexus three visceral clefts and arches
- EM0107** CHICK (60 HRS), w.m.



EM0108	CHICK (72 HRS), w.m.
EM0109	CHICK (72 HRS), serial c.s.
EM0110	CHICK (72 HRS), typical c.s.
EM0111	CHICK (72 HRS), serial sagittal section
EM0112	CHICK (72 HRS), typical sagittal section
EM0113	CHICK (96 HRS), showing 38-41 somites, torsion completed, considerable increase of size and differentiation of the whole embryo.
EM0114	CHICK (96 HRS), serial c.s.
EM0115	CHICK (96 HRS), typical c.s.
EM0116	CHICK (96 HRS), serial sagittal section
EM0117	CHICK (96 HRS), typical sagittal section

**Pig**

EM0125	PIG (6 MM), whole mount
EM0126	PIG (6 MM), serial c.s.
EM0127	PIG (6 MM), typical c.s.
EM0128	PIG (6 MM), serial sagittal section
EM0129	PIG (6 MM), typical sagittal section
EM0130	PIG (10 MM), whole mount
EM0131	PIG (10 MM), serial cross section
EM0132	PIG (10 MM), typical cross section
EM0133	PIG (10 MM), serial sagittal section
EM0134	PIG (10 MM), typical sagittal section
EM0135	PIG (10 MM), whole mount of head
EM0136	PIG (15 MM), serial cross section
EM0137	PIG (15 MM), spaced serial cross section
EM0138	PIG (15 MM), typical sagittal section
EM0139	PIG (15 MM), spaced serial sagittal section
EM0140	PIG (20 MM), spaced serial c.s.

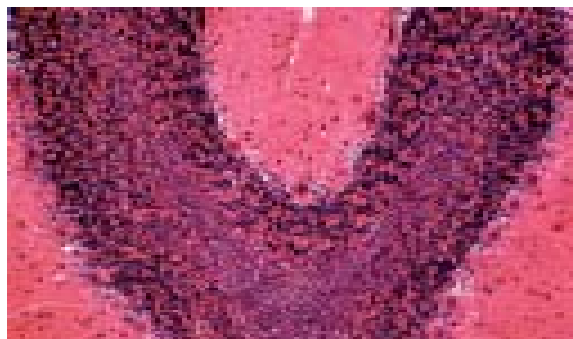
**HISTOLOGY****Epithelial tissues**

HE0001	HUMAN SQUAMOUS EPITH, smear, isolated cells, scrapings from the mucous membrane of the human mouth
HE0002	SQUAMOUS EPITH (FROG), flat mount of frog skin, typical epithelial cells stained to show cell borders and nuclei
HE0003	STRATIFIED SQUAMOUS EPITH, sections from mammalian esophagus
HE0004	CILIATED EPITHELIUM, sections through roof of mouth of the frog
HE0005	PSEUDO-STRATIFIED COLUMNAR CILIATED EPITH, shown in detail in sections of trachea
HE0006	CUBOIDAL EPITH, sections of kidney showing cuboidal cells in tubules
HE0007	COLUMNAR EPITH, sections from the intestines
HE0008	TRANSITIONAL EPITH, sections from urinary bladder
HE0009	OLFACTORY EPITHELIUM, sections from nasal septum
HE0010	MITOCHONDRIA, section from turtle liver
HE0012	HUMAN EPITH (3 TYPES), sections of squamous, columnar and cuboidal epithelium

**Connective tissues**

HC0020	RETICULAR TISSUE, sections from lymph node using silver impregnation
HC0021	AREOLAR (FIBRO ELASTIC TISSUE), showing fibroblasts histiocytes, elastic fibers and collagen fibers

HC0022	CHROMATOPHORES, w.m. of amphibian skin showing large pigment cells
HC0023	ADIPOSE TISSUE, sections in which the fat has been removed in the cells
HC0024	OMENTUM, w.m. of cat mesentery
HC0025	WHITE FIBROUS TISSUE (TENDON), w.m. ligament stained and teased
HC0026	WHITE FIBROUS TISSUE (TENDON), l.s. showing strands of cells in dense fiber bundles
HC0027	YELLOW ELASTIC TISSUE, w.m. ligament stained and teased
HC0028	YELLOW ELASTIC TISSUE, l.s. showing ligamentum nuchae, shows dense elastic fibers and arrangement of nuclei
HC0028a	FAT TISSUES
HC0029	HYALINE CARTILAGE, section of well fixed tissue
HC0030	ELASTIC CARTILAGE, rabbit's ear. Elastic tissue stain demonstrate clearly the large number of branching fibers between the lacunae
HC0031	FIBRO CARTILAGE, sections form in mamalian tissue showing strands of cells in dense fiber bundle
HC0032	DEVELOPING CARTILAGE BONE, sections from long bone of cat fetus or newborn rat
HC0033	BONE, sections of flat bone of skull showing osteoblasts and bone cells
HC0034	BONE, c.s. decalcified and stained, showing details of Haversian system
HC0035	BONE, l.s. decalcified and stained
HC0036	BONE, c.s. and l.s. decalcified and stained
HC0039	BONE MARROW, sections of tong bone, blood cells in various stages of development, with megakaryocytes conspicuous
HC0040	BONE MARROW, smear
HC0041	EMBRYONIC CONNECTIVE TISSUE, mesenchyme section from chick or pig embryo
HC0042	MUCOID TISSUE, section from human umbilical cord
HC0043	BONE, cancellous or spongy section decalcified and stained

**Blood Vascular system**

HB0050	BLOOD (HUMAN), smear showing erythrocytes the various types of leucocytes and also blood platelets
HB0051	BLOOD (FROG), smear showing nucleated erythrocytes
HB051a	BLOOD (TOAD), smear, giemsa stain
HB0052	BLOOD (CAT), smear, giemsa stain
HB0053	BLOOD CHICKEN, smear giemsa stain
HB0054	BLOOD (FISH), smear, giemsa stain
HB0055	BLOOD (RABBIT), smear, giemsa stain
HB0061	ARTERY, section of medium size
HB0063	VEIN, section showing endothelium, fibers and connective tissue
HB0064	ARTERY AND VEIN, sections from cat or rabbit, elastic tissue stained
HB064a	AORTA, large artery section
HB0066	ARTERY (VEIN AND NERVE), sections from cat or rabbit, special elastic tissue preparation
HB0067	HEART (FROG ENTIRE), l.s. showing chambers as well as histological structure
HB0068	HEART (MAMMAL ENTIRE), l.s. showing chambers and valves
HB0069	SPLEEN (MAMMAL), section demonstrating capsule, pulp, trabeculae, malphigian bodies
HB0070	SPLEEN (FROG)
HB0070a	SPLEEN (HUMAN)
HB0071	LYMPH GLAND, section showing cortex and lymphoid tissue

**Muscular System**

- HM0080** SMOOTH MUSCLE, teased isolated muscle fibers carefully stained to show spindle-shaped cell with single elongated nucleus
- HM0081** SMOOTH MUSCLE, c.s. and l.s. from intestine demonstrating typical structures
- HM0082** STRIATED MUSCLE, teased for striations and nuclei
- HM0083** STRIATED MUSCLE, c.s. demonstrating muscle fibers and bundles
- HM0084** STRIATED MUSCLE, l.s. stained for striations, nuclei and endomysium
- HM0085** STRIATED MUSCLE FROG, l.s. stained for striations, nuclei and endomysium
- HM0086** STRIATED MUSCLE, c.s. and l.s. through mammalian diaphragm, stained to show striations to the best advantage
- HM0086a** non striated muscle, l.s. & c.s.
- HM0087** CARDIAC MUSCLE, section stained to demonstrate intercalated discs and approximately central location of nuclei in fibers



**Nervous System**

- HN0088** BRAIN (WHOLE), l.s. from mouse
- HN0089** CEREBRUM (H & E), sections demonstrating nerve cells and fibers
- HN0090** CEREBRUM, silver imp.
- HN0091** CEREBELLUM (H & E), sections showing molecular and granular layer of cortex and Purkinje cells
- HN0092** CEREBELLUM, silver imp. section showing distribution and size of cells and fibers in the cerebral cortex
- HN0093** SPINAL CORD (HUMAN), sections showing gray and white matter
- HN0094** SPINAL CORD, c.s. in spinal canal of cat or rat
- HN0095** SPINAL GANGLION, l.s. from dorsal root
- HN0096** SPINAL CORD (FROG), c.s. in spinal canal
- HN0097** SYMPATHETIC GANGLION, l.s. from dorsal root
- HN0098** COW NERVE CELLS, smear of spinal cord showing multipolar neurons
- HN0099** NERVE (MEDULLATED), c.s. showing bundles of fibers
- HN0100** NERVE (MEDULLATED), l.s.
- HN0100a** NERVE (UNMEDULLATED), l.s. showing unmyelinated fibers
- HN0101** MEDULLATED AND UNMEDULLATED NERVE, l.s. in one slide
- HN0102** NERVE, c.s. and l.s. nerve bundles showing nerve fibers and connective tissue coverings
- HN0102a** NERVOUS TISSUE
- HN0103** NERVE FIBERS, teased, osmium, stained, myelinated showing the nodes of Ranvier
- HN0104** OPTIC NERVE, sections showing bundles of nerve fibers surrounded by sheath Payers and anastomosing septa of pia among fiber bundles
- HN0105** RETINA, sections from mammal demonstrating details of retina choroid and sclera
- HN0106** EYE (TADPOLE), c.s. of frog embryo thru eye region
- HN106a** EYELID (HUMAN), sections showing glands, muscles and hair follicles
- HN0107** MOTOR NERVE ENDING, teased, carefully selected to show both the branching nerve fibers and the end plates
- HN0108** PACINIAN CORPUSCLES, w.m. of corpuscles of Vater-Pacini from mesentery, example of an encapsulated nerve ending
- HN0109** MEISSNER'S CORPUSCLE, sec. from human fingertip

- HN0110** COCHLEA, l.s. of inner ear of guinea pig showing details of organ of corti
- HN0111** SPINAL CORD, l.s. from cow showing Nissl bodies in large nerve cells
- HN0112** LACRYMAL GLAND, section from rabbit showing typical serous gland
- HN0113** MEDULLA OBLONGATA (Human), c.s. human

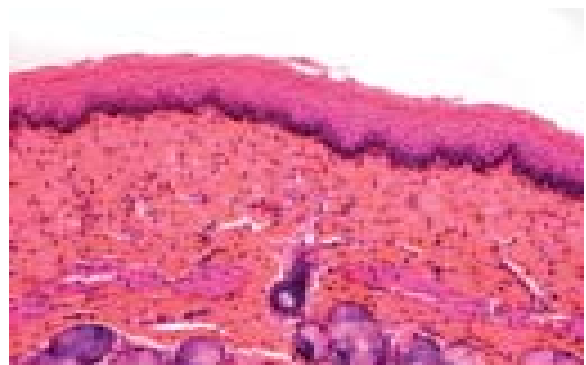


**Integumentary System**

- HI0120** HUMAN SKIN (BROWN), v.s. showing all layers of epidermis, dermis and subcutaneous tissue
- HI0123** FROG SKIN, v.s. showing layers and mucous gland
- HI0124** TOAD SKIN, v.s. showing poison gland
- HI0125** HUMAN SCALP, v.s. showing hair follicle, sweat glands and oil glands
- HI0126** HUMAN SCALP, v.s. demonstrating hair follicle, sweat glands and oil glands
- HI0127** HUMAN HAIR, w.m.
- HI0128** MAMMARY GLAND (HUMAN ACTIVE), section showing alveoli greatly expanded filled with secretory materials during lactation
- HI0129** CAT SKIN (with hair), l.s. demonstrating special skin structures such as gland and hair
- HI0130** HUMAN PALMAR SKIN

**Respiratory System**

- HR0140** LUNG (HUMAN), section showing thick cornified layer
- HR0141** LUNG (FROG), c.s. through lobule showing general structure
- HR0142** LUNG (CAT), section though alveolar structures
- HR0143** TRACHEA, c.s. showing cartilage rings and general structure
- HR0144** TRACHEA
- HR0145** LARYNX, l.s. showing cartilage and other topo-graphically related structures
- HR145a** BRONCHIOLE
- HR145b** EPIGLOTTIS



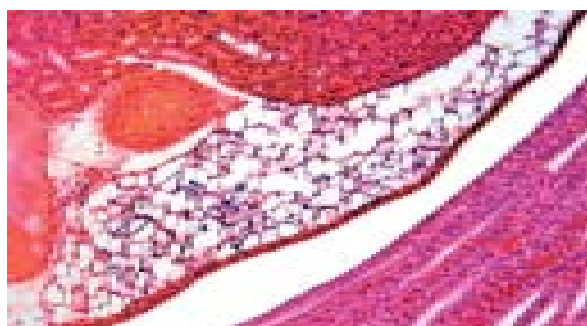
**Digestive System**

- HD00151** TOOTH ADULT (CAT), l.s. showing tooth in situ with surrounding topography
- HD0151a** TOOTH ADULT (CAT), c.s.
- HD0152** TONGUE (HUMAN), c.s. showing papilla and general tongue structures
- HD0153** TONGUE (CAT), c.s. showing general structure
- HD0154** TONGUE (CAT), v.s. showing heavy cornification of papillae in rasping type of tongue
- HD0155** TONGUE (FROG), c.s.

- HD0156 TONGUE (RABBIT), section showing taste buds in foliate papillae
- HD0157 PAROTID GLAND, mammal, section showing serous salivary acini, ducts, inter-lobular connective tissue, fat cells
- HD0158 SUBMAXILLARY GLAND, section showing mixed salivary gland predominantly mucous
- HD158a SUBLINGUAL GLAND, dog, c.s.
- HD0159 ESOPHAGUS (HUMAN), c.s. through upper region showing striated muscle
- HD159a ESOPHAGUS (HUMAN), c.s. through lower region
- HD0160 ESOPHAGUS (STOMACH), section through junction showing transition between stratified squamous and simple columnar epithelia
- HD0161 ESOPHAGUS (CAT or RAT), c.s. showing stratified squamous epithelium, glands of submucosa and two layers of muscularis
- HD0162 STOMACH CARDIAC HUMAN, c.s. through cardiac region
- HD0174 SMALL INTESTINE (FROG), c.s. showing simple columnar epithelium and goblet (mucous secreting) cells
- HD0175 LARGE INTESTINE (COLON) (CAT or DOG), c.s. demonstrating absence of villi and changes in the muscular layer. Goblet cells are numerous
- HD175a LARGE INTESTINE (RAT), c.s. demonstrating mucous goblet cells in the epithelium
- HD175b LARGE INTESTINE (HUMAN), c.s. showing simple columnar epithelium and goblet cells.
- HD0176 PANCREAS (HUMAN), c.s. showing acini with secretory and centrolinar cells and islands of Langerhans.
- HD0177 PANCREAS (CAT OR DOG), c.s. showing alveoli, ducts, and Islands of Langerhans
- HD0178 LIVER (HUMAN), c.s. clearly stained for general structures.
- HD0179 LIVER (PIG), c.s. demonstrating the lobular structure of the liver through heavily developed connective tissue
- HD0180 LIVER (CAT), c.s. showing hepatic cells, Kupifer's cells, blood vessels and bileducts
- HD0181 LIVER (RAT), c.s.
- HD0182 LIVER (FROG), c.s. showing typical hepatic cells, sinusoid cells and blood vessels
- HD0183 LIVER (SALAMANDER)
- HD0184 GALL BLADDER, c.s. through mucosa with simple columnar epithelium, serous layer and muscular layer
- HD184a BILE DUCT, c.s. through extra-hepatic portion
- HD0186 CAECUM, c.s.
- HD0187 LARGE INTESTINE (RECTUM), c.s. showing abundance of goblet cells and other structures
- HD0188 ANUS, I.s.
- HD0189 LIP, I.s. showing cutaneous areas, red area and oral mucosa

### Urinogenital System

- HU0190 KIDNEY (HUMAN), c.s. through cortex and medulla
- HU0191 KIDNEY (CAT or DOG), section for detailed study of cortex and medulla. Glomeruli and the different types of tubules well differentiated
- HU0192 KIDNEY (FROG) section demonstrating structures of mesonephros
- HU0193 KIDNEY (RAT ENTIRE), I.s. through cortex, medulla, pelvis
- HU0194 URETER (CAT or DOG), c.s. showing epithelium, muscularis and adventitia
- HU0195 URETHRA (FEMALE), c.s. showing typical structure with clarity
- HU0196 URETHRA (MALE), c.s. through prostate end portion of urethra
- HU0197 URINARY BLADDER (FROG), w.m.
- HU0198 URINARY BLADDER (CAT or RABBIT), c.s. showing structures of fundus
- HU0199 URINARY BLADDER (HUMAN), section



### Reproductive

- HR0200 OVARY (FROG), cs. showing large numbers of mature ova supported in connective tissue
- HR0201 OVARY (CAT), c.s. showing developing follicles
- HR-202 OVARY (RAT), c.s. showing general structure
- HR0203 OVARY (RABBIT), c.s. through mature ovary, showing oogenesis
- HR203a OVARY (Human), c.s.
- HR0204 OVIDUCT (FALLOPIAN TUBE), cs. from region near fimbriated extrernity, showing complicated folding of mucous membrane
- H2204a CERVIX (human), c.s.
- HR0205 UTERUS (CAT), c.s. demonstrate changes in mucosa
- HR205a UTERUS (HUMAN SECTION)
- HR0206 VAGINA (CAT)
- HR206A VAGINA (HUMAN), c.s. showing general structure of wall
- HR0207 TESTIS ADULT (HUMAN), c.s. showing general structure, capsule, tubules, interstitial tissue
- HR0208 TESTIS (RAT), c.s. showing capsules, seminiferous tubules and interstitial cells
- HR0208a TESTIS, (ADULT RABBIT)
- HR0209 TESTIS (MOUSE), c.s. showing details of meiotic division
- HR0210 TESTIS(FROG), c.s. showing seminiferous tubules, along with the general structure
- HR0211 PROSTATE (HUMAN), c.s. showing glandular epithelium and fibro-muscular stroma
- HR0212 PENIS (INFANT), c.s. showing urethra, corpora cavernosa and corpus spongiosum
- HR0213 SPERM SMEAR (HUMAN), smear of spermatozoa
- HR0214 UMBILICAL CORD (HUMAN)
- HR0215 PLACENTA (HUMAN), c.s. showing general structure with chorionic villi
- HR0216 EPIDIDYMIS (HUMAN), c.s. demonstrating general structure
- HR216a EPIDIDYMIS and TESTES (HUMAN)
- HR0217 SEMINAL VESICLE, sections showing mucosa folded-up, forming irregular crypts lined with epithelium
- HR0218 SPERMATIC CORD, c.s. showing vas deferens with surrounding tissues, blood vessels
- HR0219 VAS DEFERENS



### Endocrine System

- HG0220 ADRENAL GLAND (HUMAN,), section showing cortex and medulla with cellular details
- HG0221 PITUITARY GLAND, section showing entire body with glandular, intermediate and nervous portion
- HG0222 THYMUS GLAND (HUMAN), sections showing Hassall's corpuscles and other details of organ
- HG0223 THYROID GLAND (HUMAN), section showing cuboidal and colloid stroma
- HG223a PARATHYROID GLAND (HUMAN), section
- HG0224 THYROID GLAND (MAMMAL), section showing simple cuboidal cells
- HG0225 TONSIL (HUMAN), section

## MITOSIS, CHROMOSOME SLIDES

<b>BO0278</b>	PLANT MITOSIS, (ONION ROOT TIP) I.s.
<b>EM0035</b>	ANIMAL MITOSIS, (ASCARIS UTERUS)
<b>EM0036</b>	ANIMAL MEIOSIS, (GRASSHOPPER TESTIS)
<b>EM0037</b>	DROSOPHILA SALIVARY GLAND CHROMOSOMES

## PARASITOLOGY

### Protozoa

<b>PA0001</b>	ENTAMOEBIA HISTOLYTICA, vegetative stage
<b>PA0002</b>	ENTAMOEBIA HISTOLYTICA (CYSTS), w.m. with 1-4 typical nuclei and frequently with the characteristic rod-shaped chromatoid bodies
<b>PA0004</b>	MIXED INFECTION showing Entamoeba, Giardia and Chilomastix
<b>PA0005</b>	ENTAMOEBIA COLI, smear of vegetative forms, non pathogenic species occur in the large intestine of man
<b>PA0006</b>	ENTAMOEBIA COLI (CYSTS), w.m. showing 1-8 typical nuclei characteristic splinter shaped chromatoidal bodies
<b>PA0007</b>	GIARDIA INTESTINALIS, w.m. trophozoites, an intestinal flagellate of man which may be mildly pathogenic in large number
<b>PA0008</b>	GIARDIA INTESTINALIS, w.m. cystic phase in human feces
<b>PA0009</b>	CHILOMASTIX MESNILI (VEGETATIVE), smear of a common non pathogenic flagellate found in the intestine of man
<b>PA009a</b>	CHILOMASTIX MESNILI, cysts, smear, distinguished from other protozoan cysts by a thickening in the wall of the anterior of the cyst
<b>PA0010</b>	BALANTIDIUM COLI, w.m., the only parasitic ciliate of man
<b>PA0011</b>	BALANTIDIUM COLI, cysts in feces
<b>PA0012</b>	OPALINA, w.m. showing cilia striations on body wall and many nuclei, a common parasite of frogs
<b>PA0013</b>	GREGARINA, w.m. of mature and developing septate gregarines from cricket caeca
<b>PA0014</b>	PLASMODIUM VIVAX, thin blood smear showing various stages cause benign tertian malaria in man
<b>PA0014a</b>	PLASMODIUM MALARIAE
<b>PA0016</b>	PLASMODIUM FALCIPARUM, blood smear showing ringforms
<b>PA0017</b>	PLASMODIUM FALCIPARUM, thin blood smear showing gametocytes
<b>PA0018</b>	PLASMODIUM FALCIPARUM, thick blood smear, parasites are more concentrated and are free from corpuscles
<b>PA0020</b>	TRYPANOSOMA LEWISI, a large flagellate from the rat
<b>PA0022</b>	ENDOLIMAX NANA (CYSTS), small parasite distinguished from E. histolytica by a large karyosome and the absence of peripheral chromatin in the nucleus.
<b>PA0024</b>	MONOCYSTIS w.m. of various stages of development in I.s. of earthworm

### Platyhelminthes

<b>PA0026</b>	FASCIOLA MIRACIDIUM, w.m. of free ciliated larvae
<b>PA0027</b>	FASCIOLA SPORO CYSTS, w.m.
<b>PA0028</b>	FASCIOLA REDIA, w.m. of mature forms showing developing cercariae
<b>PA0029</b>	FASCIOLA CERCARIAE, w.m.
<b>PA0030</b>	FASCIOLA HEPATICA, w.m. of sheep liver fluke
<b>PA0031</b>	FASCIOLA HEPATICA, c.s. in liver
<b>PA0032</b>	FASCIOLA HEPATICA, long section
<b>PA0033</b>	FASCIOLA HEPATICA OVA, w.m. of eggs in sheep feces
<b>PA0034</b>	FASCIOLA GIGANTICA, w.m.
<b>PA0035</b>	EURYTREMA PANCREATICUM, w.m. of the parasite of the pancreatic duct of pigs and bile ducts of cattle and related animals
<b>PA0036</b>	SCHISTOSOMA JAPONICUM, w.m. of male and female in copula
<b>PA0037</b>	SCHISTOSOMA JAPONICUM, w.m. of male parasite of the blood vessels of man
<b>PA0038</b>	SCHISTOSOMA JAPONICUM, w.m. of female
<b>PA0039</b>	SCHISTOSOMA JAPONICUM OVA, w.m. of eggs showing abbreviated terminal spines
<b>PA0040</b>	SCHISTOSOMA JAPONICUM CERCARIAE, w.m. of cercaria
<b>PA0040a</b>	SCHISTOSOMA JAPONICUM MIRACIDIUM, w.m. of miracidium
<b>PA0041</b>	SCHISTOSOMA JAPONICUM, section of liver showing lesion caused by the invasion of eggs
<b>PA0042</b>	SCHISTOSOMA JAPONICUM, section of intestine showing ova
<b>PA0043</b>	SCHISTOSOMA JAPONICUM, section of infected spleen showing ova
<b>PA0046</b>	PARAGONIMUS WESTERMANI OVA, w.m. of numerous typical operculated eggs
<b>PA046a</b>	PARAGONIMUS WESTERMANI OVA, c.s. of infected lung tissue showing insertion of young worm
<b>PA0048</b>	CLONORCHIS SINENSIS, c.s. of infected liver showing parasites in lumen of bile ducts
<b>PA0049</b>	CLONORCHIS SINENSIS OVA, w.m. of eggs in feces
<b>PA0050</b>	DIPYLIDIUM CANINUM, w.m. of scolex showing the retractile rostellum armed with several rows of minute hooks
<b>PA0052</b>	DIPYLIDIUM CANINUM, (Mature and gravid) w.m. of proglottid showing the egg capsules
<b>PA0053</b>	DIPYLIDIUM CANINUM, w.m. of mature segment
<b>PA0054</b>	DIPYLIDIUM CANINUM, w.m. of ripe segment
<b>PA0055</b>	DIPYLIDIUM CANINUM OVA, w.m. of eggs in feces
<b>PA0056</b>	HYMENOLEPIS NANA OVA, w.m. of eggs in feces
<b>PA0056a</b>	HYMENOLEPIS NANA, w.m. of dwarf tapeworm of man, rat and mouse
<b>PA0057</b>	HYMENOLEPIS DIMINUTA, w.m. of scolex without hooks
<b>PA0058</b>	HYMENOLEPIS DIMINUTA, w.m. of mature segment
<b>PA0058a</b>	HYMENOLEPIS DIMINUTA, w.m. of immature segment
<b>PA0059</b>	HYMENOLEPIS DIMINUTA, w.m. of gravid segments
<b>PA0060</b>	HYMENOLEPIS DIMINUTA OVA, w.m. of eggs that are characteristically large and transparent and provide the best known material for the study of hexacanth embryos
<b>PA0061</b>	CYSTICERCOID of HYMENOLEPIS, w.m.
<b>PA0062</b>	TAENIA SAGINATA, w.m. of immature segment
<b>PA0063</b>	TAENIA SAGINATA, w.m. of mature segment showing reproductive organs
<b>PA0064</b>	TAENIA SAGINATA, w.m. of gravid segment showing eggs in gravid uterus
<b>PA0065</b>	TAENIA SAGINATA, c.s. of mature proglottid
<b>PA0066</b>	TAENIA SAGINATA OVA, w.m. of eggs
<b>PA0067</b>	TAENIA SOLIUM CYSTICERCUS, w.m. of the bladder worm stage of the pork tapeworm of man showing invaginated scolex
<b>PA0068</b>	TAENIA SOLIUM CYSTICERCUS, section of pork muscle showing parasite in situ
<b>PA0069</b>	TAENIA SOLIUM, SCOLEX, w.m.
<b>PA0070</b>	DIPHYLLOBOTHRIUM LATUM, w.m. of gravid segment of fish tapeworm
<b>PA070A</b>	DIPHYLLOBOTHRIUM LATUM OVA



PA0071	<b>Nemathelminthes</b> ASCARIS LUMBRICOIDES (MALE), c.s. through sex organs
PA0073	ASCARIS LUMBRICOIDES (MALE AND FEMALE), c.s. through the sex organs showing the detailed morphology of a triploblastic animal
PA0074	ASCARIS LUMBRICOIDES OVA, w.m. of eggs in feces
PA0074a	ASCARIS LUMBRICOIDES, part of the worm w/ eggs
PA0075	ASCARIS LUMBRICOIDES, c.s. anterior to gonads
PA0076	ASCARIS LUMBRICOIDES, c.s. through anterior portion showing triradiate lumens of esophagus
PA0077	ANCYLOSTOMA CANINUM (MALE), w.m. of dog hook worm showing internal anatomy and bursa
PA0078	ANCYLOSTOMA CANINUM (FEMALE), w.m. of dog hookworm
PA0079	ANCYLOSTOMA CANINUM (OVA), w.m. of egg in feces
PA0079a	ANCYLOSTOMA (MALE & FEMALE)
PA0080	HOOKWORM, RHABDITIFORM LARVA, w.m.
PA0081	HOOKWORM, FILARIFORM, w.m. of infective larvae
PA081a	HOOKWORM OVA, w.m.
PA082	ENTEROBIUS VERMICULARIS (MALE), w.m. of seat worm or pinworm of man
PA082a	ENTEROBIUS VERMICULARIS (FEMALE), w.m. of pinworm of man especially of children
PA0083	ENTEROBIUS VERMICULARIS (OVA), w.m. of eggs
PA0084	TRICHURIS TRICHIURA (MALE), w.m. of whipworm that infects the caecum and appendix of man
PA0085	TRICHURIS TRICHIURA (FEMALE), w.m.
PA0086	TRICHURIS TRICHIURA (OVA), w.m. of typically barrel shaped eggs with a thin shield projection at either pole
PA0087	TRICHURIS TRICHIURA, in c.s. of human appendix
PA0088	TRICHINELLA SPIRALIS LARVA, in heavily infected muscle, teased or sectioned
PA0089	TRICHINELLA SPIRALIS LARVA, w.m. from teased muscle showing encapsulated larva, stained and cleared to show anatomy
PA0090	STRONGYLOIDES (FILARIFORM), w.m. of larva
PA0091	EGGS of TRICHURIS, (ASCARIS and ANCYLOSTOMA) w.m. of mixed infection
PA0092	CAPILLARIA, w.m. of male or female



PA0100	<b>Parasitic Insects</b> PEDICULUS HUMANUS CAPITIS (MALE), w.m. of head louse of man
PA0100a	PEDICULUS HUMANUS CAPITIS (MALE & FEMALE)
PA0101	PEDICULUS HUMANUS CAPITIS (FEMALE), w.m. of head louse of man
PA0102	PEDICULUS HUMANUS CAPITIS (OVA), w.m. attached on hair
PA0103	PEDICULUS HUMANUS CAPITIS (NYMPH), w.m.
PA0104	PEDICULUS HUMANUS CORPORIS, w.m. of adult, human body louse, „grayback“ or „cootie“ vector of epidemic typhus, french fever and European relapsing fever
PA0105	PUBIC LOUSE, PHTHIRIUS PUBICUS
PA0106	HUMAN FLEA, PULEX IRRITANS
PA0107	SOFT TICK, ARGAS
PA0108	HARD TICK, PHIPICEPHALUS
PA0109	ITCH MITE of MAN, SARCOPTES
PA0110a	CARP LOUSE, ARGULUS

PA0110	<b>Arthropoda</b> CIMEX LECTULARIS, w.m. of bedbug showing mouth parts of and internal structures
PA0111	CTENOCEPHALI DES FELIS (MALE), w.m. showing external anatomy and copulatory organ
PA0112	CTENOCEPHALIDES FELIS (FEMALE), w.m. showing anatomy of spermatheca
PA0113	ANOPHELES, w.m. of larva

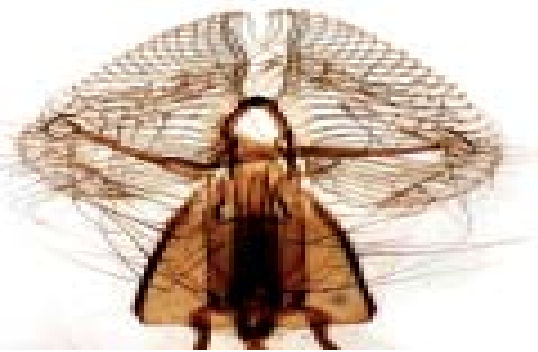
PA0114	ANOPHELES, w.m. of pupa
PA0115	ANOPHELES, w.m. of male adult, transmits westernequine encephalities as well as avian, simian and human malaria
PA0116	ANOPHELES, w.m. of male head
PA0117	ANOPHELES, w.m. of adult female
PA0118	ANOPHELES, w.m. of female head
PA0120	AEDES, w.m. of larva
PA0121	AEDES, w.m. of larva
PA0122	AEDES, w.m. of adult female
PA0123	CULEX, w.m. of larva
PA0124	CULEX, w.m. of pupa
PA0125	CULEX, w.m. of male
PA0126	CULEX, w.m. of female adult
PA0127	LYPONYSSUS BACOTI, w.m. of rat mite
PA0128	HAEMATOPINUS SUIIS, w.m. of pig louse

## ZOOLOGY



### Protozoa

ZO001	AMOEBA, w.m. of one celled protozoan showing, pseudopodia and nucleus
ZO002	DIDINIUM, w.m. showing ciliate with their cilia in rows
ZO003	DIDINIUM, devouring paramecium w.m.
ZO004	EUGLENA, w.m. showing nucleus, chloroplasts, contractile vacuole and the flagellum
ZO005	FORAMINIFERA, w.m. showing mixture of coiled and biserial fossils forms of several genera
ZO006	PARAMECIUM PLAIN, w.m. demonstrating the macronucleus and micronucleus, food and contractile vacuole, oral groove and gullet
ZO007	PARAMECIUM, w.m. showing pellicle
ZO008	PARAMECIUM in FISSION, w.m. several specimens especially selected each showing a stage in the fission
ZO008a	PARAMECIUM in FISSION, w.m. of mass culture, numerous paramecia on each slide with some individuals in different stages of fission
ZO009	PARAMECIUM in CONJUGATION, w.m. showing a large number of specimens in various stages of sexual reproduction
ZO010	PARAMECIUM, w.m. showing food vacuole
ZO011	RADIOLARIA, w.m. of siliceous shell of various species
ZO012	STENTOR, w.m. showing large macro-nucleus which appears in the form of a long chain of beads
ZO013	VORTICELLA, w.m. of peritrichous ciliate with contractile stalk and band-shaped nucleus
ZO014	MIXED PROTOZOA, w.m. of mixed species of the common representative forms including amoeba proteus, paramecium, Euglena
ZO015	PLANKTON, w.m. of different species
ZO016	ARCELLA, w.m. of an ameboid protozoan with achitinous ornamented test
ZO017	BLEPHARISMA, w.m. of a large ciliate with divided macronucleus
ZO0019	SPIROSTOMUM, w.m. of a large protozoan with beaded macronucleus
ZO019a	PODOPHYRYA, w.m.



- Porifera**
- ZO020 GRANTIA (SCYPHA), c.s. showing general structure of canals and body walls
- ZO021 GRANTIA, l.s. showing relation of incurrent and radial canals
- ZO022 GRANTIA, c.s. and l.s. showing spicules and their relationship to the canals
- ZO023 COMMERCIAL SPONGE, macerated preparation showing structure of horny skeleton
- ZO024 SPICULES, w.m. of spicule showing typical forms of calcareous sponge
- ZO025 SPICULES (SILICEOUS)
- ZO026 SPICULES (MIXED)
- ZO027 LEUCOSOLENIA SPICULES
- ZO028 GRANTIA (SPICULES)
- ZO029 SYCON SPICULES
- ZO030 SPONGILLA

- Cnidaria**
- ZO035 HYDRA (PLAIN)
- ZO036 HYDRA (PLAIN), c.s. showing clearly the differentiated cells of the epidermis and gastrodermis separated by the non-cellular mesoglea
- ZO037 HYDRA (PLAIN), l.s. demonstrating the cellular structure and the body plan
- ZO038 HYDRA WITH BUD, w.m. showing the well expanded and stained body
- ZO039 HYDRA WITH BUD, l.s. showing the continuation of the gastrovascular cavity and the body layers of the adult into the bud
- ZO040 HYDRA WITH SPERMARY, w.m. showing the spermary
- ZO041 HYDRA WITH SPERMARY, c.s. showing the testes
- ZO042 HYDRA WITH OVARY, w.m. showing the appearance of the ovary as a thickening of the body wall
- ZO043 HYDRA WITH OVARY, c.s. showing relation to ectodermal and interstitial cells
- ZO044 OBELIA, w.m. of hydroid colony showing hydranths and gonangia, walls of the gastrovascular cavity and other structures are well defined

- Platyhelminthes**
- ZO050 PLANARIA (CARBON FED), w.m. showing the digestive system filled with carbon to contrast with the stained background
- ZO050a PLANARIA (PLAIN), w.m. of an expanded and flattened body to show the general structures
- ZO051 PLANARIA, c.s. of the 3 regions of the body

- Rotifers**
- ZO060 ROTIFERS, w.m. of expanded fresh water species

- Bryozoa**
- ZO065 BUGULA, w.m. showing part of expanded colony

- Echinodermata**
- ZO070 STARFISH, w.m. of small specimen
- ZO071 STARFISH, w.m. of an isolated pedicellariae
- ZO072 STARFISH, c.s. of ray or arm including hepatic caecum

- Mollusca**
- ZO075 SNAIL RADULA, flat mount showing rows of teeth
- ZO076 CLAM, w.m. of glochidea
- ZO077 CLAM, c.s. of gills showing lamellae and gill filaments
- ZO078 CLAM, c.s. of the body
- ZO079 AURELIA EPHYRA, w.m. of free swimming young medusa

- Annelida**
- ZO080 LEECH, w.m. of small expanded specimen
- ZO081 LEECH, c.s. of the 3 regions showing relationships of structures
- ZO082 EARTHWORM, c.s. through the pharynx
- ZO083 EARTHWORM, c.s. through esophagus
- ZO084 EARTHWORM, w.m. of nephridium
- ZO085 EARTHWORM, c.s. selected to show nephridiopore
- ZO086 EARTHWORM, c.s. through clitellum
- ZO087 EARTHWORM, c.s. selected to show whole or part of setae
- ZO088 EARTHWORM, c.s. through the middle
- ZO089 EARTHWORM, l.s. through anterior through seminal receptacle and seminal vesicle
- ZO090 EARTHWORM, l.s. middle
- ZO091 EARTHWORM, l.s. posterior
- ZO092 EARTHWORM, c.s. through seminal vesicle
- ZO093 EARTHWORM, c.s. through the heart region
- ZO094 NEREIS, c.s. of the trunk showing general body structures
- ZO095 NEREIS (PARAPODIUM), showing setae, aciculi, cirri, etc.



- Arthropoda**
- ZO0100 CYCLOPS (MALE AND FEMALE), w.m. with egg sacs
- ZO0101 CYCLOPS (FEMALE), w.m. with egg sacs
- ZO0102 DAPHNIA, w.m. showing the general structure of cladocera
- ZO0110 SPIDER, w.m. showing exoskeleton of entire small specimen
- ZO0111 SPIDER SPINNERETTE, w.m.
- ZO0115 BUTTERFLY WING, w.m. of wings showing scales
- ZO0117 BUTTERFLY, w.m. of antenna with terminal knob
- ZO0118 BUTTERFLY, w.m. of proboscis, an organ adapted for sucking freely exposed nectar; not a piercing mouth part
- ZO0125 MOTH, w.m. of wings
- ZO0126 MOTH, w.m. of wings
- ZO0127 MOTH, w.m. of proboscis
- ZO0128 BUTTERFLY AND MOTH, w.m. of proboscis on one slide
- ZO0129 BUTTERFLY AND MOTH, w.m. of antenna on one slide
- ZO0130 GRASSHOPPER MOUTHPARTS, w.m. of seven pieces that are carefully dissected and arranged in correct topographic relationship
- ZO0130a GRASSHOPPER, w.m. of leg
- ZO0130b GRASSHOPPER, w.m. of wing
- ZO0135 MOSQUITO MALE, w.m. showing the general features
- ZO0136 MOSQUITO FEMALE, w.m. showing the general features



ZO166a	COCKROACH, w.m. of mouth parts
ZO0167	INSECT SPIRACLE, w.m. of body wall showing opening
ZO0168	INSECT, w.m. of trachea showing transversestriation of chitinous layer
ZO0169	INSECT LEGS, w.m. of legs types illustrating membranous (fly), hook and ridget-lacking (honeybee), scaled (butterfly), and chitinous/membranous (squash bug)
ZO0170	CRICKET, w.m. of leg and ear
	<b>Chordata</b>
ZO0180a	AMPHIOXUS, w.m. of mature specimen showing gonads
ZO0181	AMPHIOXUS OVARY, c.s. through region of female gonads
ZO0182	AMPHIOXUS TESTIS, c.s. through region of male gonads
ZO0183	AMPHIOXUS, c.s. through pharyngal region
ZO0184	AMPHIOXUS, c.s. through intestinal region
ZO0185	AMPHIOXUS, c.s. through caudal region
ZO0186	AMPHIOXUS, c.s. of male through the 3 regions (anterior, middle, posterior)
ZO186A	AMPHIOXUS, c.s. of female through the 3 regions
ZO0200	GANOID SCALE, w.m. of isolated scale of bony structure
ZO0201	PLACOID SCALE, w.m.
ZO0202	CTENOID SCALE, w.m. showing charteristic spines of distal border
ZO0203	CYCLOID SCALE, w.m. of isolated scale showing characteristic smooth curve of the distal border
ZO0204	SALMO SCALE, w.m.
ZO0210	FEATHER (FILOPLUME), w.m. of the general structure of the hair feather
ZO0211	CONTOUR FEATHER, w.m. of the general structure of the penna
ZO0212	DOWN FEATHER, w.m. of the general structure of the plumulae
ZO0213	FEATHER COMPOSITE, w.m. of the three types, contour, down, and filoplume mounted together
ZO0214	FISH GILL, section showing gill filaments
ZO0215	FISH INTESTINE, section showing general structure
ZO0216	FISH TAIL, section
ZO0217	AMPHIOXUS SKIN, v.s.
ZO0218	YOUNG AMPHIOXUS SKIN, v.s.
ZO0219	POSTERIOR PORTION of AMPHIOXUS PHARYNX, t.s.
ZO0220	TAIL REGION of AMPHIOXUS, t.s.
ZO0221	INTESTINAL REGION of AMPHIOXUS, t.s.
ZO0222	PETROMYZON SKIN, v.s.
ZO0223	YOUNG PETROMYZON SKIN, t.s.
ZO0224	TRUNK REGION of PETROMYZON, t.s.
ZO0225	TAIL REGION of PETROMYZON, t.s.
ZO0226	BUCCAL FUNNEL of PETROMYZON showing HORN Y TEETH, sec.
ZO0227	SKIN of DOG FISH, v.s.
ZO0228	SKIN of DOG FISH, surface view
ZO0229	PHARYNGEAL REGION of DOG FISH, t.s.
ZO0230	TRUNK REGION of DOG FISH, t.s.
ZO0231	REGION of DOG FISH, t.s.
ZO0232	FROG SKIN, v.s.
ZO0233	TADPOLE SKIN, v.s.
ZO0234	TAIL REGION of TADPOLE, t.s.

ZO0235	LIZARD SKIN, v.s.
ZO0236	GANOID, CYCLOID and CTENOID SCALES
ZO0237	SCALES SKIN of FISHES, v.s.
ZO0238	PHARYNGEAL REGION of PETROMYZON, t.s.
ZO0239	PHARYNGEAL REGION of TILAPIA, t.s.
ZO0240	ASCIDIA LARVA
ZO0241	ASCIDIA, w.m.
ZO0242	AMPHIOXUS TRUNK REGION, t.s.
ZO0243	ACIDIA, ENLARGED PORTION OF PHARYNX
ZO0244	PHARYNGEAL REGION of AMMOCOET'S LARVA
ZO0245	TILAPIA TAIL REGION, t.s.
ZO0246	TILAPIA TRUNK REGION, t.s.
ZO0247	PIG SKIN, MAMMALIAN, v.s.
ZO0248	AMPHIOXUS, EMBRYONIC STAGES
ZO0249	FROG, EMBRYONIC STAGES
ZO0250	CHICK, EMBRYONIC STAGES
ZO0251	PIGEON SKIN, v.s.
ZO0252	TYPES of FEATHERS
ZO0253	THERMOBIA, SILVER FISH
ZO0254	FROG, TESTIS, t.s.
ZO0255	TADPOLE TRUNK, t.s.
ZO0256	TADPOLE GILLS, t.s.

**Arthropoda - Latest**

ZA0171	CENTIPEDE Mouth Parts, SCOLOPENDRA
ZA0172	PERIPATUS, t.s.
ZA0173	PERIPATUS, l.s.
ZA0174	COCKROACH, Mouth Parts
ZA0175	GRASSHOPPER, Mouth Parts
ZA0176	BUTTERFLIES, Mouth Parts (sucking)
ZA0177	HONEY BEE WORKER, Mouth Parts
ZA0178	HOUSE FLY, Mouth Parts
ZA0179	MOSQUITOES, Mouth Parts
ZA0180	BED BUG, Mouth Parts
ZA0181	COCKROACH, Leg Parts
ZA0182	MANTID, Leg Parts
ZA0183	HONEY BEE, Leg Parts
ZA0184	GRASSHOPPER, Leg Parts
ZA0185	WATER BEETLES, Leg Parts
ZA0186	MOLE CRICKET, Leg Parts
ZA0187	LOUSE, Leg Parts
ZA0188	HOUSE FLY, Leg Parts
ZA0189	TEGMINE of COCKROACH
ZA0190	ELYTRON of BEETLES
ZA0191	HEMIELYTRON of GREEN BUG
ZA0192	SCALEY WINGS of MOTH
ZA0193	MEMBRANOUS WING
ZA0194	HALTERES of FLIES
ZA0195	HOUSE FLY OVIPOSITOR
ZA0196	HONEY BEE STING
ZA0197	COLLEMBOLA, SPRING TAILS
ZA0198	COCKROACH AMERICANA, PERIPLANETA AMERICANA
ZA0199	COCKROACH GERMANICA, BLATTELLA GERMANICA
ZA0200	COCKROACH ORIENTALIS, BLATTA ORIENTALIS
ZA0201	THERMOBIA, SILVER FISH
ZA0202	MUSCA DOMESTICA, HOUSE FLY
ZA0203	SPODOPTERA LITTORALIS, COTTON LEAF WORM
ZA0204	VERMIFORM LARVAE, HOUSE FLY
ZA0205	ERUCIFORM LARVAE, SILK WORM
ZA0206	CAMPODEI FORM LARVA, APHID LION
ZA0207	SCARABAEI FORM LARVA, SCARAB BEETLE
ZA0208	COARCTATE PUPA, HOUSE FLY PUPA
ZA0209	OBTECT PUPA, SILK WORM
ZA0210	EXARATE PUPA, HONEY BEE
ZA0211	COTTON APHID, PHIS GOSSYPHII
ZA0212	FLESH FLY, SARCOPHAGE
ZA0213	TACHINIA FLY, TACHINIA SP.
ZA0214	FRUIT FLY, DROSOPHILA MELANOGASTER
ZA0215	COCKROACH ANTENNA, SETACEOUS
ZA0216	MOSQUITO MALE ANTENNA, PLUMOSE
ZA0217	MOSQUITO FEMALE ANTENNA, PILOSE
ZA0218	GRASSHOPPER ANTENNA, FILIFORM
ZA0219	TRIBOLIUM ANTENNA, CAPITATE
ZA0220	BUTTERFLIES ANTENNA, CLAVITE

- ZA0221 CLICK BETTLE ANTENNAE, Serrate
- ZA0222 MOTHS ANTENNA, Bipectinate
- ZA0223 SCARAB BEETLE ANTENNAE, Lamellate
- ZA0224 WHITE ANTS ANTENNA, Moniliform
- ZA0225 HONEY BEE ANTENNA, Geniculate
- ZA0226 HOUSE FLY ANTENNA, Aristate
- ZA0227 TABANID FLY ANTENNA, Stylate
- ZA0228 ANOPHELES, Female
- ZA0229 ANOPHELES, Male
- ZA0230 CULEX, Female
- ZA0231 CULEX, Male
- ZA0232 MAYFLIES, Polymitarcys
- ZA0233 Pigeon Lice, LIPERUS
- ZA0234 HAEMATOPINUS TUBERCULATUS
- ZA0235 THRIPS TABACI
- ZA0236 Aphid Lion, CHRYSOPA VULGARIS
- ZA0237 DEUDORIX LIVIA
- ZA0238 Silk Worm, BOMBYX MORI
- ZA0239 Wax Moth, GALLERIA MELLONELLA
- ZA0240 Praying Mantis, MANTIS RELIGIOSA
- ZA0241 Desert Locust, SCHISTOCERCA GREGARIA
- ZA0242 Egyptian Locust, ANACRIDIMUM AEGYPTIUM
- ZA0243 Dragon Fly, CROCOTHEMES ERYTHRAEA
- ZA0244 Damsel Fly, ISCHNURA SENEGALENSIS
- ZA0245 Black Field Cricket, GRYLLUS BIMACULATUS
- ZA0246 White Ants, TERMITES
- ZA0247 Mole Cricket, GRYLLOTALPA
- ZA0248 Earwig, LABIDURA
- ZA0249 Click Beetle, AGRYPNUS NOTODONTA
- ZA0250 Spiny Boll-Worm, EARIAS
- ZA0251 Pink Boll-Worm, PECTINOPHORA
- ZA0252 CREAMY CUT WORM
- ZA0253 Painted Lady BUTTER FLY, VANESSA
- ZA0254 Cabbage BUTTER FLY, PIERIS RAPAE
- ZA0255 CATAGLYPHIS BICOLOR
- ZA0256 Scarab Beetle, SCARABAEUS SACER
- ZA0257 Lady Bird Beetle, COCCINELLA UNDECIM PUNCTATA
  
- ZA0258 Lentils Beetle, BRUCHUS LENTIS
- ZA0259 Rice Weevil, SITOPHILUS ORYZAE
- ZA0260 Granary Weevil, SITOPHILUS GRANARIUS
- ZA0261 Water Beetle, CYBISTER
- ZA0262 Water Beetle, HYROUS
- ZA0263 CHRYSOMPHALUS FICUS
- ZA0264 Mealy Bug, ICERYA AEGYPTIACA
- ZA0265 Bed Bug, CIMEX LECTULARIUS
- ZA0266 Green Cotton Bug, NEZARA VIRIDULA
- ZA0267 Giant Water Bug, LETHOCERUS
- ZA0268 Oriental Wasp, VESPA ORIENTALIS
- ZA0269 Honey Bee, APIS MELLIFERA
- ZA0270 CALOSOMA CHLOROSTICTUM
- ZA0271 BLAPS POLYETHRESIA
- ZA0272 TRIBOLIUM CONFUSUM
- ZA0273 DERMESTES VULPINUS
- ZA0274 PACHNODA FASCIATA
- ZA0275 PAEDERUS ALFIERII
- ZA0276 XYLOCOPA AESTUANS
- ZA0277 PENTODON BISPINOSUS
- ZA0278 TABANUS TAENIOLA
- ZA0279 HIPPOBOSCA EQUINA
- ZA0280 GASTROPHILUS INTESTINALIS
- ZA0281 MEDITERRANEAN FRUIT FLY
- ZA0282 CTENOCEPHALIDES CANIS
- ZA0283 Life Cycle of Fruit Fly, DROSOPHILA MELANOGASTER
  
- ZA0284 Alimentary Canal of GRASSHOPPER
- ZA0285 Alimentary Canal of GRYLLOTALPA
- ZA0286 Alimentary Canal of HONEY BEE
- ZA0287 Alimentary Canal of COCKROACH
- ZA0288 Alimentary Canal of LETHOCERUS
- ZA0289 GRASSHOPPER ESOPHAGUS, t.s.
- ZA0290 GRASSHOPPER PHARYNX, t.s.
- ZA0291 GRASSHOPPER CROP, t.s.
- ZA0292 GRASSHOPPER GIZZARD, t.s.
- ZA0293 GRASSHOPPER MESENTRON, t.s.
- ZA0294 GRASSHOPPER COLON, t.s.
- ZA0295 GRASSHOPPER ILEUM, t.s.



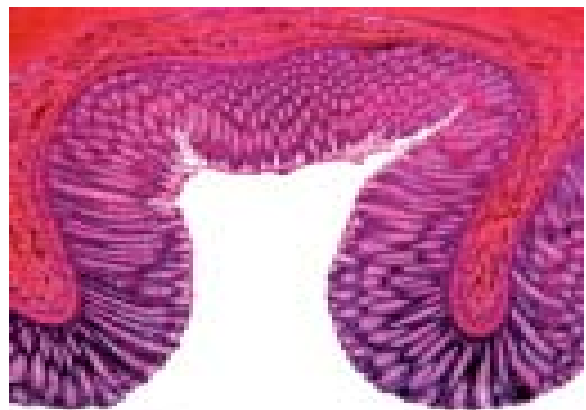
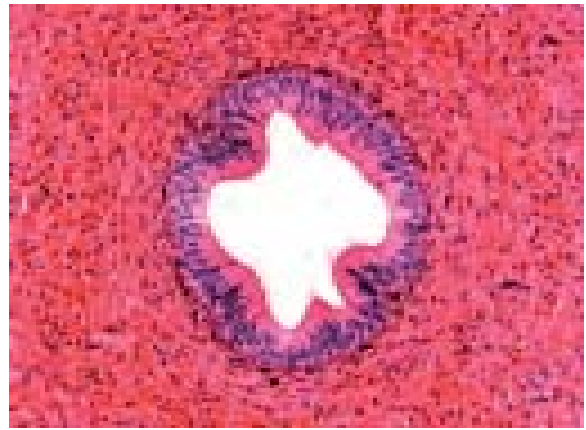
**HISTOLOGY SET 100****Article No. HT100**

<b>HE0007</b>	Columnar Epithelium sec., human
<b>HE0004</b>	Ciliary Epithelium sec., human
<b>HE0006</b>	Cuboidal epithelium sec., human
<b>HE0005</b>	Pseudostrat. ciliated col. epithelium, human
<b>HE0002</b>	Simple Squamous Epithelium sec., human
<b>HE0003</b>	Strat. Squamous Epithelium sec., human
<b>HE0013</b>	Oral Epithelium cell, human
<b>HI0126</b>	Human Skin Hair Follicle sec.
<b>HI0125</b>	Human Skin Gland Sweat sec.,
<b>HC0023</b>	Adipose Tissue sec., human
<b>HC0044</b>	Dense Connective tissue, I. s., human
<b>HC0029</b>	Hyaline Cartilage sec., human
<b>HC0030</b>	Elastic Cartilage sec., human
<b>HC0034</b>	Ground Bone c.s, human
<b>HC0035</b>	Ground Bone I.s., human
<b>HC0036a</b>	Decalcified Bone c. s., human
<b>HC0036</b>	Decalcified Bone I. s., human
<b>HM0088</b>	Skeletal Muscle c. s., human
<b>HM0089</b>	Skeletal Muscle I. s., human
<b>HM0090</b>	Skeletal Muscle c.s. & I.s., human
<b>HC0045</b>	Loose Connective Tissue w.m., human
<b>HM0080</b>	Smooth Muscle I. s., human
<b>HM0081</b>	Smooth Muscle c.s., human
<b>HM0081a</b>	Separated Smooth Muscle w.m., human
<b>HM0087</b>	Cardiac Muscle sec., human
<b>HM0087a</b>	Cardiac Muscle I.s., human
<b>HM0091</b>	Atrial Wall sec., human
<b>HM0092</b>	Ventricular Wall sec., human
<b>HN0111</b>	Spinal Cord I.s., human
<b>HN0107a</b>	Motor Neuron w.m., human
<b>HN0107</b>	Motor Nerve Ending w.m., human
<b>HN0102</b>	Nerve c.s., human
<b>HN0095</b>	Spinal ganglion I.s., human
<b>HN0100</b>	Nerve I.s., human
<b>HB0050</b>	Human Blood smear
<b>HB0051</b>	Frog Blood smear
<b>HB0072</b>	Pigeon Blood smear
<b>HB0055</b>	Rabbit Blood smear
<b>HC0040</b>	Red bone marrow smear, human
<b>HC0040a</b>	Red bone marrow sec, human
<b>HB0071</b>	Lymphonodus sec., human
<b>HG0222</b>	Thymus Gland sec., human
<b>HD0157</b>	Parotid Glandulose sec., human
<b>HD0190</b>	Submandibular gland sec., human
<b>HD0158a</b>	Sublingual gland sec., human
<b>HD0191</b>	Taste Buds sec., human
<b>HD0191</b>	Tongue I.s., human
<b>HR0144</b>	Trachea sec., human
<b>HR0145a</b>	Bronchus sec., human
<b>HD0159</b>	Esophagus c.s., human
<b>HD0160a</b>	Esophagus Stomach Junction, human



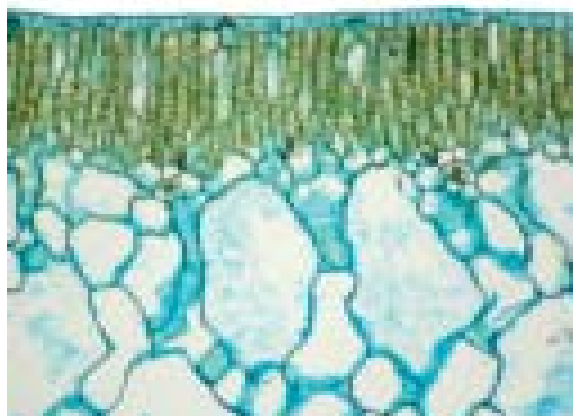
**HISTOLOGY SET 100 - Continuation****Article No. HT100**

- HD0192** Gastric Wall sec., human  
**HC0040** Red Bone Marrow smear, human  
**HD0193** Pyloric Stomach sec., human  
**HD0194** Duodenum c.s., human  
**HD0195** Jejunum sec., human  
**HD0196** Ileum l.s., human  
**HD0197** Colon l.s., human  
**HD0188** Rectum l.s., human  
**HD0186** Cecum sec., human  
**HD0178** Liver sec., human  
**HR0140** Lung sec., human  
**HD0184** Gall Bladder sec., human  
**HD0184a** Bile Duct sec., human  
**HD0198** Spleen sec., human  
**HD0176** Pancreas sec., human  
**HB0061** Artery c.s., human  
**HB0063** Vein c.s., human  
**HB0064** Artery & Vein c.s., human  
**HN0089** Cerebrum sec., human  
**HN0090** Cerebellum sec., human  
**HU0190** Kidney c.s., human  
**HU0190a** Kidney l.s., human  
**HU0199** Urinary Bladder sec., human  
**HU0194** Ureter c.s., human  
**HR0217** Seminal Vesicle l.s., human  
**HR0220** Fallopian Tube l.s., human  
**HR203a** Ovary l.s., human  
**HR205a** Uterus sec., human  
**HG0222** Thymus sec., human  
**HR0207** Testis sec., human  
**HR0221** Uterine neck sec., human  
**HR206a** Vagina sec., human  
**HR0222** Spermatozoa (H) Smear, human  
**HR0212a** Penis l.s., human  
**HR0211** Prostate c.s., human  
**HD0174a** Small Intestine sec., human  
**EM0038** Human Chromosome (male)  
**EM0039** Human Chromosome (female)  
**HB0050a** Human Blood smear (Giemsa stain)  
**HB0050b** Human blood smear (Wright's stain)  
**HD0199** Mitochondria, human  
**HD0200** Golgi Apparatus, human  
**HR0207** Human Testis sec.  
**HR0216** Human Epididymus sec.  
**HG0220** Adrenal gland sec., human  
**HG0226** Human Appendix sec.  
**HI0128** Human Mammary gland sec.  
**HU0190** Kidney Artery Injection sec., human  
**HR0140a** Lung Artery Injection sec., human



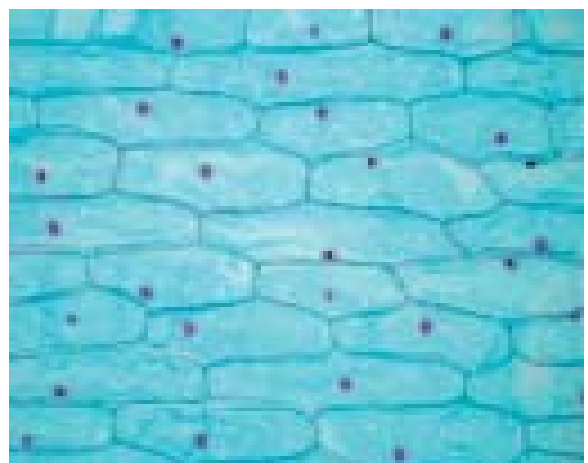
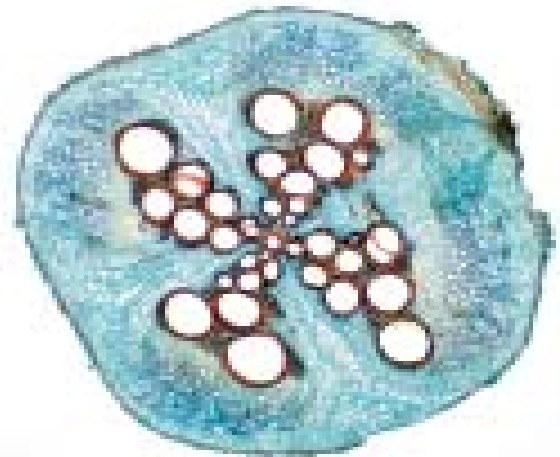
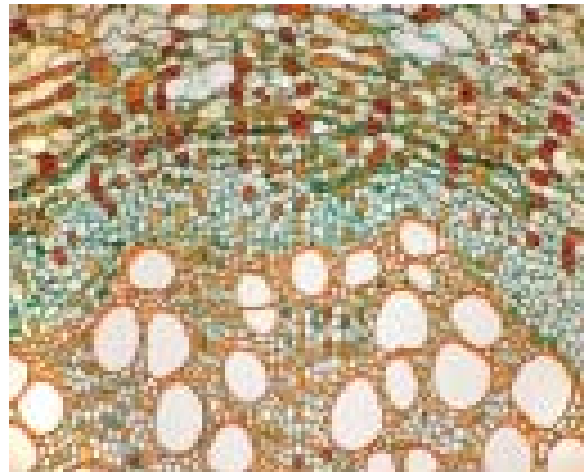
**BIOLOGY SET A100****Article No. BG100A**

- ZO0035** Hydra w.m.  
**HN0089** Cerebellum sec.  
**HD0179** Pig liver, sec.  
**EM0037** Giant chromos., salivary gland, w.m.  
**ZA0302** Aphis w.m.  
**BO0597** Marchantia, thallus, sec.  
**BO0607** Monocot & Dicot leaves, c.s.  
**BO0556** Ficus elastica leaf, c.s.  
**BO0733** Etranychus telarius w.m.  
**BO0733** Lung, sec.  
**HM0079** Skeletal muscle  
**HD0178** Liver, sec.  
**HD0160** Wall of stomach, sec.  
**HB0051** Frog, blood smear  
**HC0019** Loose connective tissue, w.m.  
**BO0568** Helianthus stem, c.s.  
**HE0013** Simple flat epithelium w.m.  
**HE0014** Stratified flat epithelium, sec.  
**BO0062** Aspergillus, w.m.  
**HB0050** Blood smear  
**ZA0196a** Honey Bee mouth parts w.m.  
**HB0064** Artery & Vein c.s.  
**BO0732** Volvox, w.m.  
**ZA0220** Butterfly mouth parts, w.m.  
**ZO0007** Paramecium w.m.  
**BO0004** Oscillatoria w.m.  
**HD0150** Taste buds, rabbit, sec.  
**HN0114** Spinal cord, rabbit, c.s.  
**HM0087** Cardiac muscle sec.  
**HC0034** Hard bone, grinding sec.  
**BO0062** Yeast, w.m.  
**HD0184** Gall bladder, sec.  
**HU0193** Kidney, l.s.  
**ZA0217** Mosquito female mouth parts, w.m.  
**HN0102** Nerve, c.s.  
**ZO0102** Daphnia w.m.  
**ZO0171** Siphonaptera w.m.  
**PA0048** Clonorchis sinensis w.m.  
**ZO0082** Earthworm c.s.  
**ZA0188a** House fly mouth parts w.m.  
**HM0080** Smooth muscle c.s.  
**ZO0136** Mosquito w.m.  
**ZA0224** Ant w.m.  
**HR0213** Sperm, smear, human  
**ZA0188** House fly leg w.m.  
**ZO0172** Mosquito larva, w.m.  
**ZO0173** Silkworm trachea w.m.  
**HE0001** Squamous epithelium  
**ZA0303** Honey bee, third leg w.m.  
**HM0081** Smooth muscle, teased prep., w.m.



**BIOLOGY SET A100 - Continuation****Article No. BG100A**

- BO0069** Penicillium w.m.  
**BO0612** Moss Antheridia, l.s.  
**BO0531** Camelia sinensis leaf, c.s.  
**BO0316** Cucurbita stem, l.s.  
**BO0271** Corn root, c.s.  
**BO0111** Moss Archegonia, l.s.  
**BO0351** Grass leaf c.s.  
**BO0623** Nerium indicum leaf, c.s.  
**BO0626** Onion stoma, w.m.  
**BO0580** Lichen, sec.  
**BO0678** Stem c.s. showing lenticels  
**BO0317** Cucurbita stem, c.s.  
**BO0733** Pine Life History  
**BO0600** Meiosis c.s., Lilium anthers showing stages of meiotic divisions  
**BO0688** Syringo stem tip, l.s.  
**BO0722** Triticum aestivum leaf, c.s.  
**BO0734** Water lily, leaf, c.s.  
**BO0537** Corn leaf, c.s.  
**BO0584** Lily anther, c.s.  
**BO0557** Fig leaf, c.s.  
**BO0573** Hydrilla terminal bud, l.s.  
**BO0725** Triticum aestivum stem, c.s.  
**BO0682** Stone cells, sec.  
**BO0541** Corn stem, c.s.  
**BO0735** Fig, 1-year stem, c.s.  
**BO0601** Mitosis onion root tip cells, sec.  
**BO0677** Stem c.s. showing coellenchyma  
**BO0540** Corn seed, l.s.  
**BO0586** Lilium ovary c.s.  
**BO0718** 3- types of plant leaves  
**BO0624** Nerium indicum stem, c.s.  
**BO0729** Vicia faba, stoma, w.m.  
**BO0736** Spirogyra conjugation, w.m.  
**BO0014** Chlamydomonas w.m.  
**BO0072** Rhizopus nigricans, w.m.  
**BO0644** Pine, 10-years stem, c.s.  
**BO0537** Maize leaf stoma w.m.  
**BO0536** Coffee leaf, c.s.  
**BO0628** Rice leaf c.s.  
**BO0737** Ginkgo leaf petiole c.s.  
**BO0674** Solanum tuberosum tuber, sec.  
**BO0720** Tilia 3 years stem  
**BO0564** Gossypium stem, c.s.  
**BO0738** Populus stem c.s.  
**BO0719** Tilia stem, c.s.  
**BO0253** Mongo bean root c.s.  
**BO0598** Max root nodule c.s.  
**BO0739** Arachis hypogaea, bean, root, c.s.  
**BO0740** Cucurbita root, c.s.  
**BO0730** Vicia faba, young root, c.s.



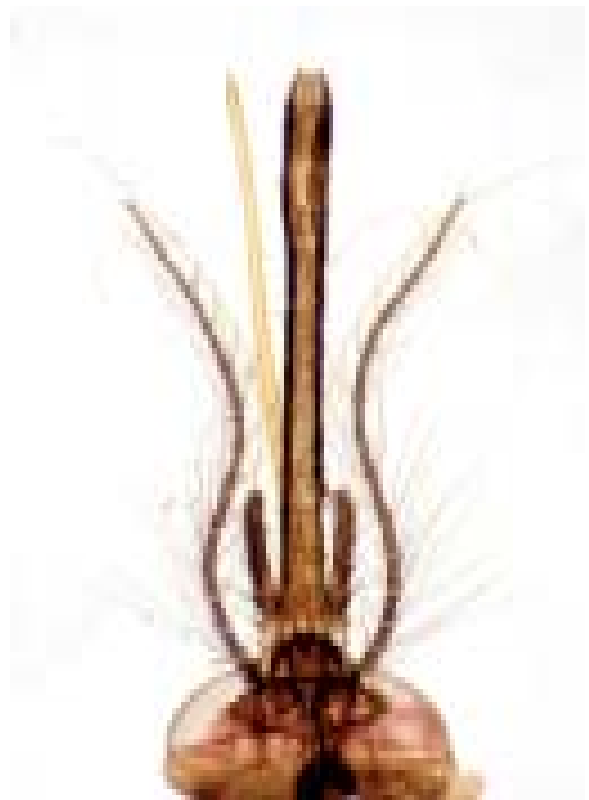
**BIOLOGY SET B100****Article No. BG100B**

- BO0273** Zea mays, corn, root Tip, l.s.  
**BO0258** Ranunculus, young root, c.s.  
**BO0601** Onion root, t.s.  
**BO0543** Cotton root, t.s.  
**BO0747a** Cucurbita, pumpkin, root t.s.  
**BO0533** Capsella, flower bud l.s.  
**BO0784** Pumpkin, stem c.s.  
**BO0785** Populus, stem t.s.  
**BO0786** Peanut, stem c.s.  
**BO0787** Cotton, stem c.s.  
**BO0788** Vitis, stem c.s.  
**BO0789** Nymphaea, stem c.s.  
**BO0790** Monocotyledon stem c.s.  
**BO0791** Dicotyledon stem c.s.  
**BO0792** Xylophta, stem, c.s.  
**BO0793** Dicotyledon Leaves, c.s.  
**BO0794** Broad Bean, Underleaf  
 Epidermis, w.m.  
**BO0405** Onion epidermis, w.m.  
**BO0069a** Penicillia, w.m.  
**BA0011a** Rhizobium meliloti, sec.  
**BM0109** Uredinales, w.m.  
**BM0089** Mucor, w.m.  
**BM0110** Ustilago tritici, w.m.  
**BM0087** Erysiphe, w.m.  
**BM0111** Saccharomycetes, w.m.  
**BM0014** Chlamydomonas, w.m.  
**BO0015** Chlorella, w.m.  
**BO0039** Euglena, w.m.  
**BO0027** Protococcus, w.m.  
**BO0029** Spirogyra, w.m.  
**ZO0007** Paramecium, w.m.  
**ZO0035** Hydra, c.s.  
**ZO0082** Earthworm, c.s.  
**BO0278** Onion, root tip, Mitosis, l.s.  
**BO0085** Lichen, sec.  
**BO0795** Pteridium, leaves, sec.  
**BO0199** Pine, needle-type leaf, c.s.  
**BO0796** Winter jasmine, t.s.  
**BO0582** Ligustrum, leaf, t.s.  
**BO0797** Ginkgo, leaf c.s.  
**BO0798** Cycas revoluta, t.s.  
**BO0136a** Pteridium, prothallium,  
 w.m.of young Sporophyte  
**BO0423** Lilium, ovary, sec.  
**BO0417** Lilium, anther, c.s.  
**BO0420** Lilium, Pollen grains, w.m.  
**BO0473** Mixed pollen grains, w.m.  
**BO0799** Brassica, flower, sec.  
**BO0800** Pine, strobil, c.s.  
**BO0801** Maize, pollen, w.m.  
**HE0003** Stratified squamous epithelium  
 human, sec.



**BIOLOGY SET B100 - Continuation****Article NO. BG100B**

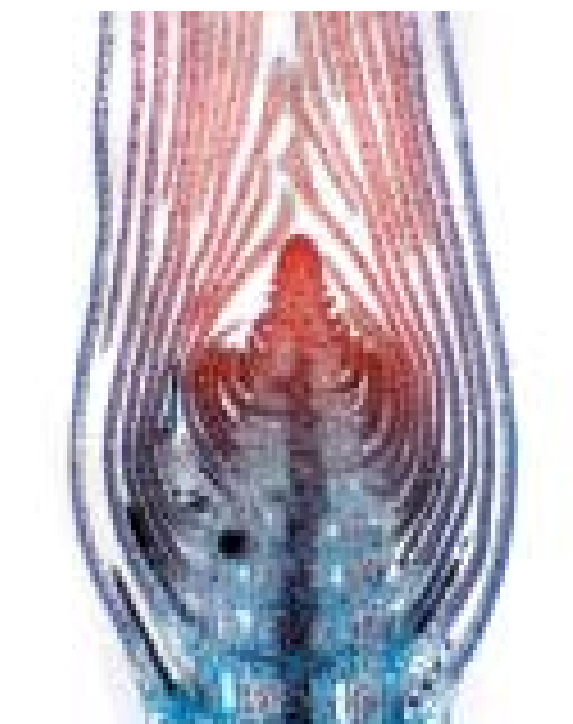
- HC0044** Dense connective tissue, human,  
(Tendon, l.s.)
- HC0045** Loose connective tissue, human, sec.
- HB0050** Human, blood smear
- HB0054** Blood, fish smear
- HB0056** Pigeon, blood smear
- HB0051** Blood, frog smear
- HM0088** Skeletal muscle, human, c.s. & l.s.
- HM0080** Smooth muscle, human, w.m.
- HM0087** Cardiac muscle, human, l.s.
- HN0107a** Motor neuron, human, w.m.
- HN0093** Spinal cord, human, c.s.
- HN0107** Motor nerve ending, human, w.m.
- HD0190** Gastric wall, human, sec.
- HU0190** Kidney, human, l.s.
- HD0175c** Intestinum tenue, human, sec.
- HE0004** Ciliated epithelium, human, sec.
- HB0071a** Lymphonodus, human, sec.
- HB0061** Artery, human, c.s.
- HB0063** Vein, human, c.s.
- HD0178** Liver, human, sec.
- HR0140** Lung, human, sec.
- HD0157a** Taste bud, human, sec.
- HR207a** Litua, human, l.s.
- HR0207** Testis, human, sec.
- HR0203a** Ovarium, human, sec.
- HR0213** Spermatozoa, human, smear
- BO0528** Aspergillus, w.m.
- PA0059a** Hymenomyces, sec.
- ZO035** Hydra, testis, c.s.
- ZO0061a** Turbellaria, sec.
- ZO0214** Fish gill, sec.
- ZO077** Clam gill, sec.
- ZO0210** Feather, w.m.
- ZO0102** Daphnia, w.m.
- ZO0254a** Frog skin, sec.
- PA0037** Schistosome (male), w.m.
- PA0038** Schistosome, miracidium, w.m.
- PA0071** Ascaris, c.s.
- ZO0178** Hirudo nipponia, sec.
- ZO0177** Aphis, w.m.
- ZO0176** Prawn antenna, w.m.
- ZO0117** Butterfly antenna, w.m.
- ZO0171** House fly wing, w.m.
- ZO0172** House bee wing, w.m.
- ZO0173** House fly, leg, w.m.
- ZO0174** Bee, third Leg, w.m.
- ZO0175** Bee mouthparts, w.m.
- ZO0176** Fly, mouth, w.m.
- ZO0128a** Butterfly mouth, w.m.
- PA0126** Culex (female) mouth, w.m.



**BOTANY SET A100**

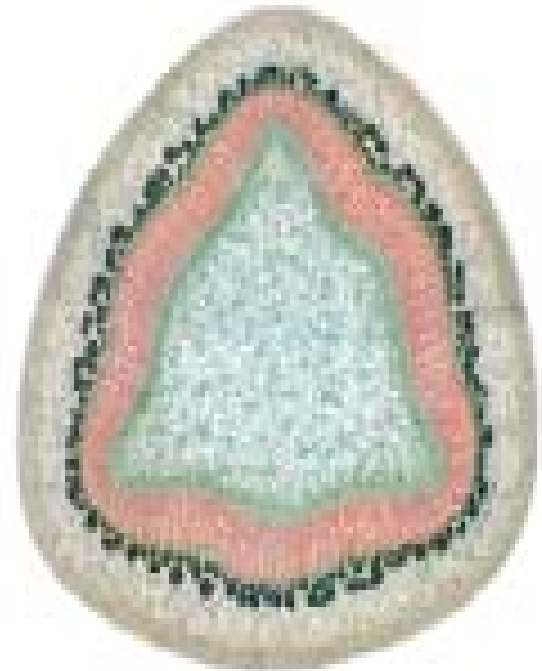
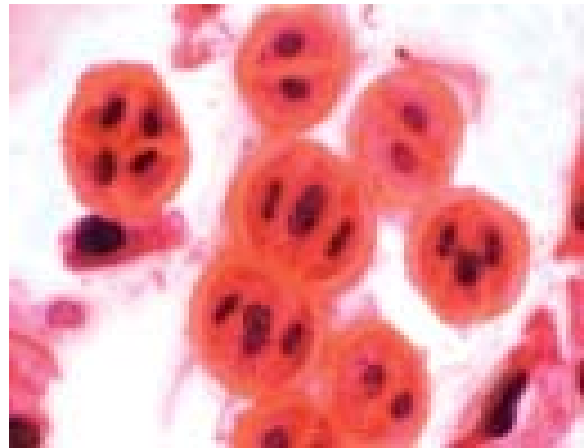
Article No. BT100A

- BO0473** Pollen, mixed types, wm.  
**BO0128a** Fern Gametophyte, wm.  
**BO0601** Onion Root Tip, ls. for Mitosis  
**BO0096a** Marchantia polymorpha, life cycle, ls.  
**BO0400a** Zea maiz, Corn, Leaf Blade w/ Motor Cells  
**BO0199** Pinus, Leaf, cs., 2-needle type  
**BO0201a** Male & Female Strobilus, cs.  
**BO0545a** Cuscuta, Stem & Median Haustorium, on Host, cs.  
  
**BO0609** Monocot & Dicot Stems, cs.  
**BO0608** Monocot & Dicot Roots, cs.  
**BO0607** Monocot & Dicot Leaves, cs.  
**BO0370** Hydro-, Meso- & Xerophytic Leaves, cs.  
**BO0401a** Elodea, Hydrophytic Leaf, Submerged, wm.  
**BO0093a** Marchantia polymorpha, Antheridium, near-median, ls.  
  
**BO0618** Moss Antheridia, ls.  
**BO0137** Equisetum sp., mature strobilus, cs.  
**BO0138b** Lycopodium lucidulum, Gemma, cs.  
**BO0138a** Lycopodium selago, Stem, cs.  
**BO0732** Hedera helix, Ivy, Soil Root, cs.  
**BO0733** Nicotiana tabacum, Root, cs.  
**BO0254** Phaseolus, Bean, Root, cs.  
**BO0668** Raphanus, Radish, Root, cs.  
**BO0692a** Begonia, Begoniaceae, Stem, cs.  
**BO0734** Brassica, Cabbage, Stem, cs.  
**BO0544a** Cucumis, Cucumber, Stem, cs.  
**BO0735** Vitis, Grape Stem, 1 Year Old, cs.  
**BO0736** Eucalyptus globulus, Leaf, cs.  
**BO0737** Nicotiana, Tobacco, Leaf, cs.  
**BO0738** Olea purpurea, Olive, leaf, cs.  
**BO0739** Prunus persica, Peach, Leaf, cs.  
**BO0740** Raphanus sativus, Radish, Leaf, cs.  
**BO0741** Brassica, Cabbage, Flower, cs.  
**BO0742** Asarum canadense, Ginger flower Bud, cs.  
**BO0743** Asclepias, Flower Bud, cs.  
**BO0744** Gaylussacia, Huckleberry, Flower Bud, cs.  
**BO0457** Lycopersicum esculentum, Tomato, Bud, Fruit, cs.  
  
**BO0454** Phaseolus vulgaris, Bean, Pod, cs., w/ attached Ovule, ls.  
  
**BO0454a** Phaseolus, Bean, Seed, cs.  
**BO0724** Triticum aestivum, Wheat Grain, cs.  
**BO0451** Zea maiz, Corn, Kernel, mature embryo, ls.  
**BO0745** Raphanus, Radish, Fruit, cs.  
**BO0746** Pyrus malus, Apple, Fruit, cs.  
**BO0590a** Lycopersicum, Tomato, Young Fruit, cs.  
**BO0747** Cucurbita, Pepo, Pumpkin, Fruit, cs.  
**BO0748** Cucurbita, Pepo, Pumpkin, Seed, cs.  
**BO0749** Citrus limonia, Lemon, Fruit, cs.  
**BO0610a** Morus alba, Mulberry, Fruit, ls.  
**BO0674a** Solanum, Potato, Fruit, cs.  
**BO0668** Raphanus, Radish, Fleshy Root, cs.  
**BO0718** Three Types of Plant Leaves



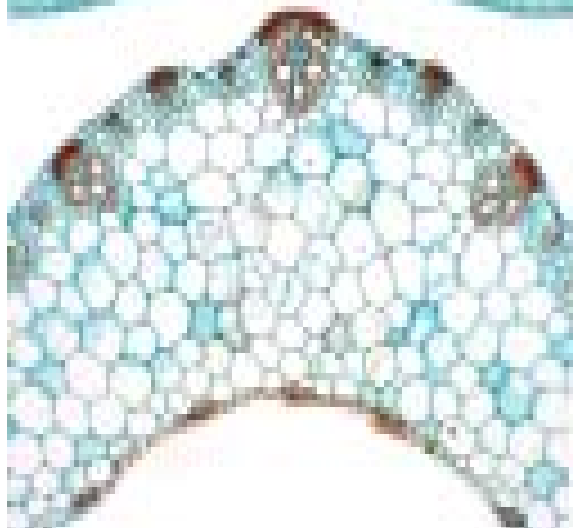
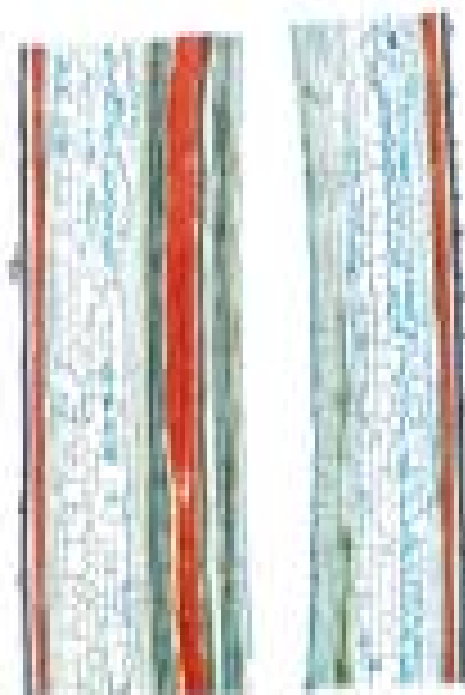
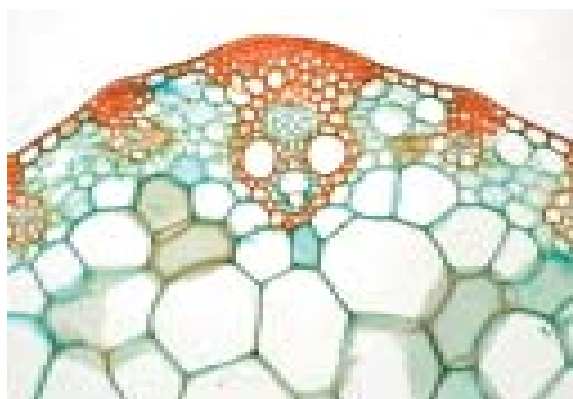
**BOTANY SET A100 - Continuation****Article No. BT100A**

- BO0405 Allium cepa, Onion, Bulb, Leaves, cs.  
 BO0721 Tilia, 1-Year, 2-Year & 3-Year Old Stems, cs.  
 BO0751 Cucumis, Cucumber, Fruit, cs.  
 BO0752 Pyrus communis, Pear, Fruit, cs. for stone cells  
 BO0753 Lilium, Bud, cs. w/ Anthers, Sporogenous tissue  
 BO0417 Lilium, Anthers w/ First Meiotic Divisions, cs.  
 BO0420 Lilium, Anthers, cs. for Mature Pollen  
 BO0424 Lilium, Ovule w/ Megaspore Mother Cell  
 BO0754 Poa pratense, Grass, Leaves, folded & open, cs.  
 BO0755 Cucumis sativus, Cucumber, Female Flower Bud, median ls.  
 BO0457a Lycopersicum, Tomato, Fruit Abscission, cs.  
 BO0632 Pelargonium, Young Stem, w/o Cork, cs.  
 BO0756 Brassica oleracea, Cabbage, Hydathode, Median, ls.  
 BO0757 Lycopersicum, Tomato, Bud, Median, ls.  
 BO0758 Aloe, Stem, ls. for Raphides (Crystals)  
 BO0274 Zea maiz, Corn, Primary Root Tip, cs. for Root Hairs  
 BO0759 Laportea, Wood Nettle, Stem, wm. for Stinging Hairs  
 BO0760 Echinocystis lobata, Wild Cucumber, Tendril, sec.  
 BO0761 Quercus, Oak, Young Stem w/ Leaf Traces, cs.  
 BO0762 Apium graveolens, Seed, cs.  
 BO0763 Pinus, Young Stem, cs.  
 BO0764 Trifolium pratense, Red Clover, Stem, Primary  
 BO0765 Nymphae odorata, White Water Lily, Hydrophytic Leaf, cs.  
 w/ Large Stellate  
 BO0281a Orchid, Root, cs., showing Water-Absorbing Velamen  
 BO0317 Cucurbita, Pepo, Pumpkin, Stem, ls. for Sieve Tubes/Phloem  
 BO0766 Monocot & Dicot Flowers, cs.  
 BO0767 Cyrtomium falcatum, Sporangia, wm.  
 BO0533 Capsella, Shepherd's Purse, Flower Bud, Ovule, sec.  
 BO0768 Abies concolor, Leaf w/ Cicatrix, ls.  
 BO0769 Zea maiz, Sec. of Young Shoot of Seedling  
 BO0770 Ricinus communis, Castor Bean, ls. Petiole, sec.  
 BO0545a Pinus Leaf, cs.  
 BO0673 Selaginella, Spike Moss, Strobilus, ls. showing Megaspores &  
 Microspores in unattached Sporangia  
 BO0419 Lilium, Anthers w/ Pollen Tetrads, cs.  
 BO0651 Pinus, Root, cs. for Ectotrophic Mycorrhiza  
 BO0730a Vicia faba, Broad Bean, Root Tip, Mitosis, Metaphase,  
 Feulgen Stain  
 BO0650a Pinus, Male Strobilus w/ Pollen, cs.  
 BO0771 Allium cepa, Onion, Mitochondria in Root Tip, ls.  
 BO0772 Chloroplasts & Dev. Starch, in Dicot Leaf, cs.  
 BO0773 Rhaphides, in Aloe Stem or Leaf, ls.  
 BO0774 Secondary Thickening of Cell Wall in Dicot Stem, cs.  
 BO0775 Pine, Pollen Cone, ls.  
 BO0776 Phaseolus vulgaris, Bean, Flower Bud, cs.  
 BO0777 Drosera, Sundew Leaf, cs. w/ unattached Digestive Gland  
 BO0778 Vitis, Grape, Leaf, cs. w/ Phylloxera  
 BO0779 Moss Life History  
 BO0780 Plasmodiophora brassicae, Plasmodia & Spores in Cabbage  
 Club Root, cs.  
 BO0781 Peronospora parasitica, Sporangiohores on Capsella Stem  
 BO0782 Rhizobium sp., Soybean Root w/ unattached Nodule, sec.  
 BO0783 Petiole, ls. Abscission Layer



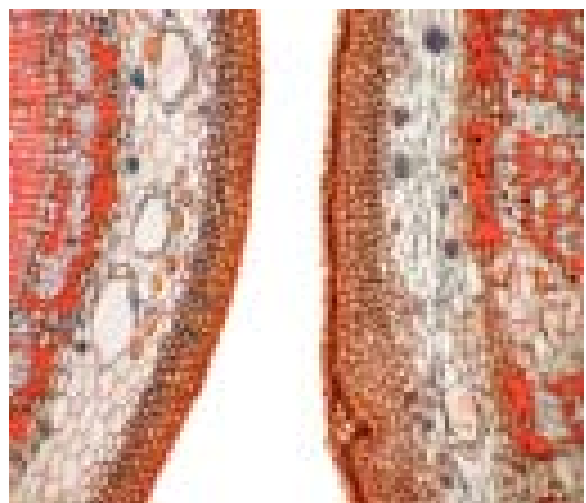
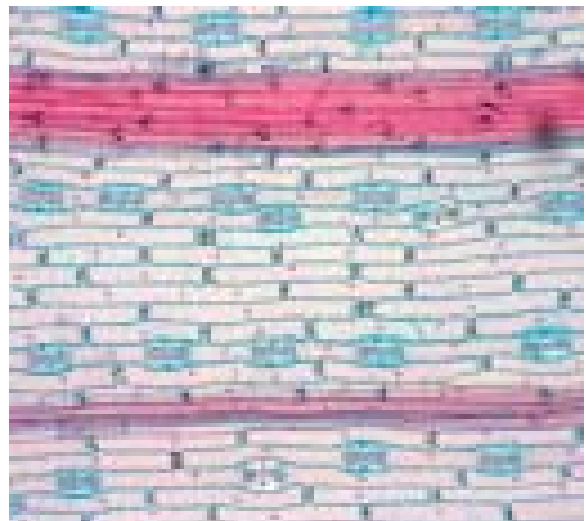
**BOTANY SET B100****Article No. BT100B**

- BO0003** Nostoc, w.m.  
**BO0008** Diatom, w.m.  
**BO0014** Chlamydomonas, w. m.  
**BO0015** Chlorella, w.m.  
**BO0035** Volvox, w. m.  
**BO0032** Spirogyra conjugation (trapezia), w. m.  
**BO0097a** Liverwort leaf  
**BO0614** Moss protonema, w.m.  
**BO0617** Whole body of moss, w.m.  
**BO0612** Moss antheridium  
**BO0111** Moss archegonium  
**BO0127** Fern leaf  
**BO0131** Fern prothallium, w.m.  
**BO0136a** Fern prothallium w/ sporophyte, w.m.  
**BO0199** Leaf of pine needle, c.s.  
**BO0801** Annual stem of Eucalyptus, c.s.  
**BO0802** Biennial stem of Eucalyptus, c.s.  
**BO0803** Triennium stem of Eucalyptus, c.s.  
**BO0201** Pine stem, c.s.  
**BO0211a** Pine development, w.m.  
**BO0209** Pine young male cone, l.s.  
**BO0208** Pine young female cone, l.s.  
**BO0475** Pine pollen, w.m.  
**BO0211** Pine life history  
**BO0504** Ginkgo leaf, c.s.  
**BO0505** Ginkgo stem, c.s.  
**BO0278** Root tip of onion, showing segmentation, l.s.  
**BO0276** Root tip of onion, c.s.  
**BO0667** Ranunculus japonicus, root, c.s.  
**BO0257** Young root of broad bean, c. s.  
**BO0257a** Old root of broad bean, c.s.  
**BO0257b** Root tip of broad bean, l.s.  
**BO0252** Old root of sunflower, c.s.  
**BO0273** Root tip of corn, l. s.  
**BO0271** Root of corn, c.s.  
**BO0275** Root of fleur-de-lis, c.s.  
**BO0265** Root of grape, c.s.  
**BO0266** Root of carrot, c.s.  
**BO0267** Root of white radish, c.s.  
**BO0268** Dodder parasitic root, c.s.  
**BO0282** Root of wheat, c.s.  
**BO0283** Dandelion flower root, l.s.  
**BO0284** Dandelion flower root, c.s.  
**BO0285** Root nodule of soybean, c.s.  
**BO0286** Young root of cotton, c.s.  
**BO0287** Older root, cotton, c.s.  
**BO0288** Root tip of cotton, l.s.  
**BO0289** Root of paddy, c.s.  
**BO0297** Root of tea, c.s.  
**BO0321** Stem of sunflower, c.s.



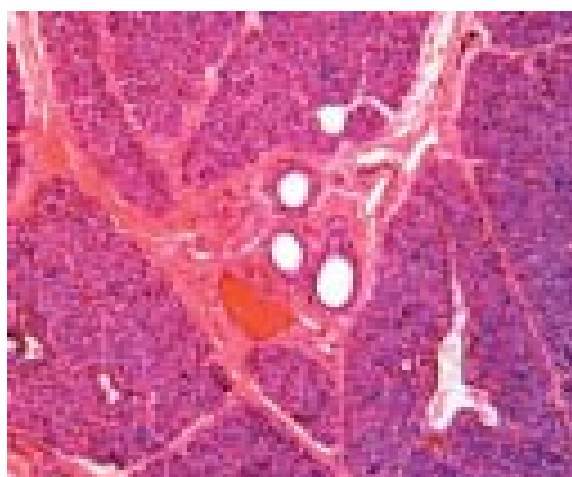
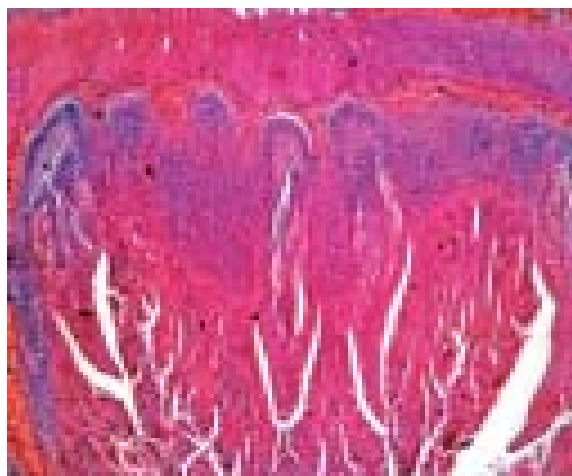
**BOTANY SET B100 - Continuation****Article No. BT100B**

- BO0323** Stem of sunflower, l.s.  
**BO0355a** Stem of corn, c.s.  
**BO0356** Stem of corn, l.s.  
**BO0359** Stem of fleur-de-lis, c.s.  
**BO0316** Pumpkin stem, c.s.  
**BO0316a** Pumpkin stem, l.s.  
**BO0317** Pumpkin stem, education, w.m.  
**BO0327** Tilia, cambium, w.m.  
**BO0328** Annual stem of basswood  
**BO0328a** 2-year stem of basswood  
**BO0329** 3-year stem of basswood  
**BO0329a** Perennial stem of basswood, c.s.  
**BO0725** Stem of wheat, c.s.  
**BO0784** Stem of clover, c.s.  
**BO0804** Bamboo shoot, l.s.  
**BO0573** Tip stem of *Hydrilla verticillata*, l.s.  
**BO0359** Pointed stem of *Miriophyllum*, l.s.  
**BO0301** Stem, *Sambucus*, w/ primary structure  
**BO0302** Stem, *Sambucus williamsii*, showing lenticel  
  
**BO0340** Stem of balsamine, l.s.  
**BO0279** Stem of candock, c.s.  
**BO0360** Stem of corn mint, c.s.  
**BO0361** Stem of corn mint, l.s.  
**BO0362** Stipe of celery, l.s.  
**BO0363** Stipe of celery, c.s.  
**BO0630** Stem of *Oryza sativa*, rice, c.s.  
**BO0544** Stem of towel gourd, l.s.  
**BO0785** Cacti, c.s.  
**BO0786** Stem of dogbane, c.s.  
**BO0787** Stem of peanut, c.s.  
**BO0788** Stem of *Phyllostachys pubescens*, c.s.  
**BO0789** Stem of tobacco, l.s.  
**BO0790** Young stem, cotton, showing primary structure, c.s.  
**BO0791** Young stem, cotton, hypo-accrue structure  
**BO0792** Old stem of cotton, c.s.  
**BO0793** Stem of pear, c.s.  
**BO0794** Lower epidermis of broadbean, w/ stoma  
  
**BO0075** Leaf of broad beans, c.s.  
**BO0405** Epidermis of onion, w.m.  
**BO0400** Leaf of corn mint, c.s.  
**BO0795** Leaf of *Pittosporum tobira ait*, c.s.  
**BO0805** Hemp leaf, w.m.  
**BO0403** Leaf of lily, c.s.  
**BO0537** Leaf of corn, c.s.  
**BO0795** Leaf of cotton, c.s.  
**BO0796** Leaf of paddy, c.s.  
**BO0797** Leaf of privet, c.s.  
**BO0798** Leaf of candock, c.s.  
**BO0799** Young embryo of shepherd's-purse  
**BO0800** Old embryo of shepherd's-purse, sec.



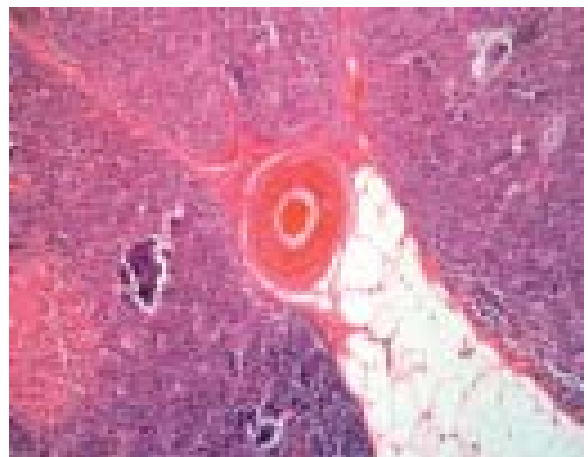
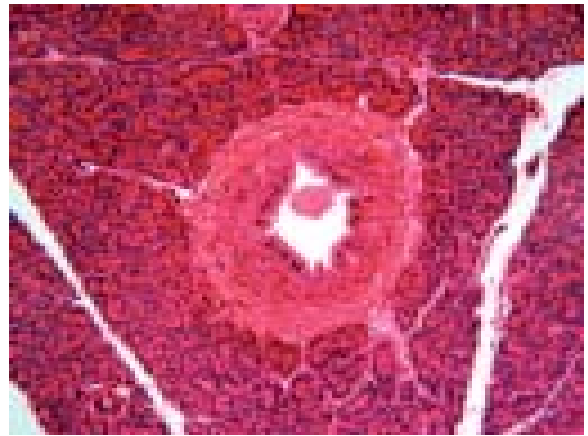
**HUMAN PATHOLOGY SET 100****Article No. PT100A**

- PL001** Myocardial hypertrophy
- PL002** Atrophy of skeletal muscle
- PL003** Compression atrophy of kidney
- PL004** Kidney proximal tubule epithelial cloudy swelling
- PL005** Liver fatty degeneration
- PL006** Central artery hyaline degeneration of spleen
- PL007** Connective tissue, hyaline degeneration
- PL008** Caseous necrosis (lymph, kidney)
- PL009** Infarction (spleen, kidney, stomach)
- PL010** Granulation tissue
- PL011** Squamous metaplasia of bronchial mucosa
- PL012** Gastric mucosa intestinal metaplasia
- PL013** Chronic congestion of lung
- PL014** Chronic congestion of liver
- PL015** Thrombus
- PL016** All kinds of inflammatory cells
- PL017** Suppurative inflammation (appendix, brain)
- PL018** Phlogistic polypi (nose or cervix)
- PL019** Tuberculoid granuloma
- PL020** Eosinophilic granuloma
- PL021** Skin papilloma
- PL022** Intestinal adenomatosis
- PL023** Fibroma
- PL024** Leiomyoma (uterus)
- PL025** Lipoma
- PL026** Hemangioma
- PL027** Squamous Cell carcinoma (well differentiated)
- PL028** Well differentiated adenocarcinoma
- PL029** Fibrosarcoma
- PL030** Leiomyosarcoma
- PL031** Rhabdomyosarcoma
- PL032** Liposarcoma
- PL033** Melanoma
- PL034** Lymph node secondary carcinoma
- PL035** Rheumatic myocarditis
- PL036** Rheumatic endocarditis
- PL037** Hypertension disease renal
- PL038** Main artery atherosclerosis
- PL039** Coronary artery atherosclerosis
- PL040** Myocardial Infarction
- PL041** Chronic bronchitis
- PL042** Emphysema
- PL043** Lobar pneumonia
- PL044** Lobular pneumonia
- PL045** Interstitial pneumonitis
- PL046** Silicosis
- PL047** Cancer of nasopharynx (vesicular nucleus Cell Carcinoma)
- PL048** Lung cancer
- PL049** Chronic atrophic gastritis
- PL050** Chronic gastric ulcer



**HUMAN PATHOLOGY SET 100 - Continuation****Article No. PT100A**

- PL051** Acute simplicial appendicitis  
**PL052** Acute phlegmonous appendicitis, sec.  
**PL053** Chronic appendicitis  
**PL054** Focal nodular hepatic cirrhosis  
**PL055** Chronic cholecystitis  
**PL056** Carcinoma of oesophagus (well differentiated squamous disease)  
**PL057** Gastric adenocarcinoma (well diff. tubular adenocarcinoma)  
**PL058** Carcinoma of the large intestine (well diff. tubular adenocarcinoma)  
**PL059** Hepatocellular carcinoma, HCC  
**PL060** Hodgkin's cells disease, Lymphoma, HL  
**PL061** Non-Hodgkin's Lymphomas  
**PL062** Acute nephritis  
**PL063** Crescentic glomerulonephritis  
**PL064** Sclerosing glomerulonephritis  
**PL065** Acute Pyelonephritis  
**PL066** Chronic pyelonephritis  
**PL067** Kidney adenocarcinoma  
**PL068** Transitional cell cancer of bladder  
**PL069** Cervicitis  
**PL070** Cervical polyp  
**PL071** Cervical Cancer (Squamous cell carcinoma)  
**PL072** Carcinoma of endometrium  
**PL073** Adenomyosis  
**PL074** Hydatid mole  
**PL075** Choriocarcinoma  
**PL076** Ovary cystadenoma  
**PL077** Breast adenofibroma  
**PL078** Breast Cancer  
**PL079** Prostate hypertrophy  
**PL080** Cancer of prostate  
**PL081** Germ cell tumor of testicle  
**PL082** Brain astrocytoma  
**PL083** Osteosarcoma  
**PL084** Miliary tuberculosis  
**PL085** Cheesy Pneumonitis  
**PL086** Kindney tuberculosis  
**PL087** Lymph nodes tuberculosis  
**PL088** Cutis lepromatous leprosy  
**PL089** Typhoid fever of intestines  
**PL090** Acute bacilli diarrhea  
**PL091** Purulent meningitis  
**PL092** Type B epidemic encephalitis  
**PL093** Acute ordinary hepatitis  
**PL094** Chronic aggressive hepatitis  
**PL095** Acute heavy hepatitis  
**PL096** Schistosomiasis  
**PL097** Simple goiter  
**PL098** Toxic goiter (hyper-thyroidism)  
**PL099** Thyroid adenoma  
**PL100** Thyroid carcinoma, sec.



**BACTERIOLOGY SET 20****Article No. BC20**

<b>BA0013</b>	Streptococcus
<b>BA0033</b>	Staphylococcus aureus
<b>BA0028</b>	Pseudomonas aeruginosa
<b>BA0027</b>	Neisseria gonorrhoea
<b>BA0030</b>	Shigella dysenteriae
<b>BA0022a</b>	Clostridium tetanus
<b>BA0009a</b>	Lactobacillus botulinum
<b>BA0023b</b>	Corynebacterium diphtheriae
<b>BA0022b</b>	Clostridium botulinum
<b>BA0008</b>	Escherichia coli
<b>BA0001</b>	Bacillus subtilis
<b>BA0036</b>	Tubercle bacillus, TB
<b>BO0060</b>	Candida albicans
<b>BA0029a</b>	Salmonella paratyphi
<b>BA0001b</b>	Bacillus anthracis
<b>BA0029</b>	Salmonella typhi (Mouse)
<b>BA0010</b>	Proteus sp.
<b>BA0031</b>	Vibrio cholerae
<b>BA0029b</b>	Salmonella typhi (human)
<b>BA0037</b>	Lymphocyte transformation

**ALGAE SET 20****Article No. AL20**

<b>BO0014</b>	Chlamydomonas
<b>BO0035</b>	Volvox
<b>BO0034</b>	Ulothrix (pond scum)
<b>BO0027</b>	Protococcus
<b>BO0023</b>	Oedogonium
<b>BO0029</b>	Spirogyra
<b>BO0017</b>	Closterium
<b>BO0028</b>	Scenedesmus
<b>BO0039</b>	Euglena
<b>BO0004</b>	Oscillatoria
<b>BO0008</b>	Diatoms
<b>BO0012</b>	Chara
<b>BO0054</b>	Polysiphonia
<b>BO0003</b>	Nostoc commune
<b>BO0032</b>	Spirogyra coupling reproduction
<b>BO0003a</b>	Nostoc commune var
<b>BO0071</b>	Polyphorus
<b>BO0051</b>	Laminaria japonica (kelp)
<b>BO0010</b>	Vaucheria
<b>BO0022</b>	Clostridium

**FUNGI SET 20****Article No. FG20**

<b>BO0074</b>	Saprolegnia
<b>BO0068</b>	Mucor
<b>BO0079</b>	Gibberella
<b>BO0072</b>	Rhizopus nigricans
<b>BO0069</b>	Penicillium
<b>BO0079</b>	Saccharomyces
<b>BO0080</b>	Actinomyces
<b>BO0081</b>	Erysiphae
<b>BO0082</b>	Uredinales
<b>BO0083</b>	Ustilaginales
<b>BO0077</b>	Puccinia graminis (U)
<b>BO0076</b>	Puccinia graminis (T)
<b>BO0062</b>	Aspergillus
<b>BO0070</b>	Peziza
<b>BO0084</b>	Ustilago sp.
<b>BO0063a</b>	Agaricus
<b>BO0064</b>	Corpinus
<b>BM0095</b>	Plasmodiophora brassica
<b>BO0084a</b>	Auricularia auricula
<b>BM0107</b>	Synchytrium endobioticum



Dear Customer,

please feel free to contact us regarding your inquiries. We have more than 20,000 different Prepared Slides in our production sortiment. We could customize according to your needs. If your requirements are not listed in our catalogue, please inform us and we are happy to make special quotations for you for any individual Prepared Slides and Sets.

TWO-K Manufacturing GmbH also manufactures and supplies wide variety of Biological and Medical Disposables.

The following are our other products. Pls. visit our website at <http://www.2k-manufacturing.com> from time to time. We are continuously developing NEW PRODUCTS which will be included at our website soon.

### BIOLOGICAL & MEDICAL DISPOSABLES

- Anatomical Models
- Blood Lancets
- Botanical Models
- CD-ROM for Schools & Education
- Colored Slides and Photomicrographs
- Cover glass
- Dissecting Sets/ Dish/ Board
- Filter Papers, all types
- Follicle Aspiration
  - Single lumen
  - Double lumen

#### Glasswares

##### Laboratory

- Beakers
- Bottles, all types
- Flasks
- Funnels
- Petri dishes, all kinds
- Thermometers
- Vials, all kinds

##### Volumetric

- Burettes
- Graduated Pipettes
- Cylinders
- Volumetric flasks
- Weighing bottles

- Leucocyte Reduction Filter for Blood
- Medical Simulators
- Microscope slides
- Microscopes

- Biological
- Industrial

- Patient Care Mannequins

- Plastomounts

- Pipets and Pipetters

- Aspirating Pipettes
- Denudation Pipettes
- ICSI Pipettes
- Holding Pipettes
- Serological Pipettes
- Transfer Pipettes

- Test Tubes, all kinds

- Round bottom test tubes
- Conical centrifuge tubes

- Slide Boxes, several types

- Stains, all kinds

- Sutures, all kinds

- Syringe filter

- Zoological Models

### LABORATORY EQUIPMENT

- Autoclaves
- Incubators
- Coagulometers
- Microtomes
- Osmometers
- Sphygmomanometers
- Stethoscopes

